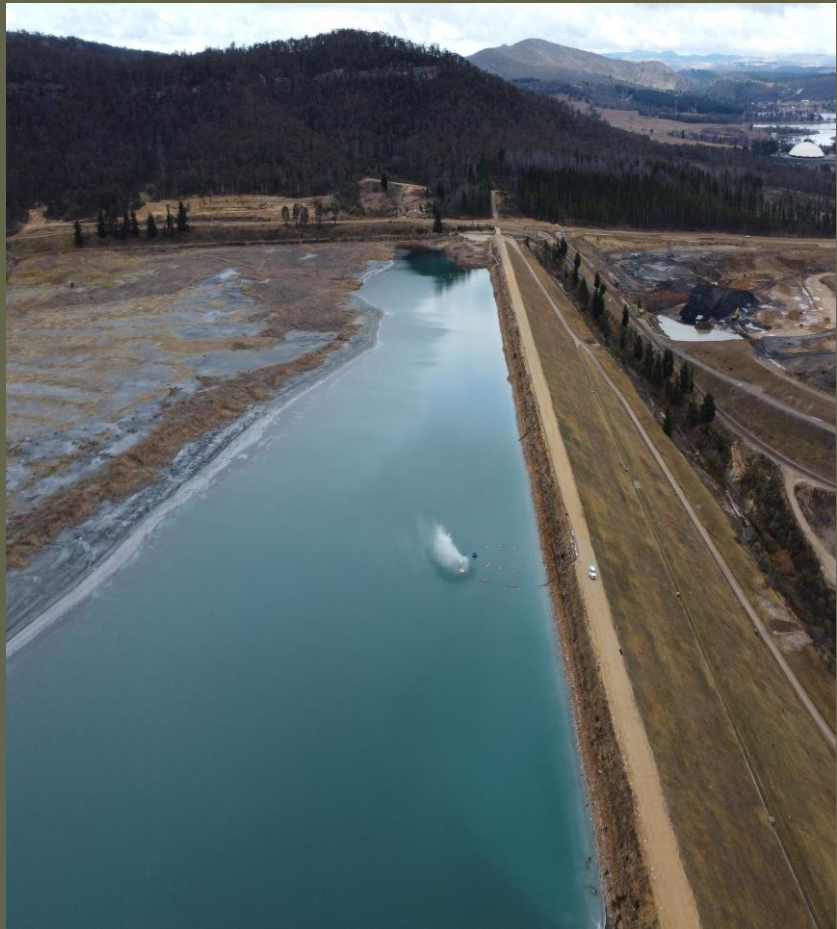



Construction Noise Management Plan

Lidsdale Ash Repository 2026



GPM

Document control

Title	Construction Noise Management Plan - Lidsdale Ash Repository 2025
Approved by GPM Environment Manager	John Pola
Signed	
Dated	31 st March 2026

Version control

Revision	Date	Description	Author	Reviewer	Approval
Rev 01	08/01/2025	Draft	Sofia Stergio	Phil Towler	John Pola
Rev 02	28/01/2025	Update consultation register	Nadia Eisenlohr	Daniel Keegan	John Pola
Rev 03	07/10/2025	Updated to address DPHI comments	Zainab Ahmed	Nadia Eisenlohr	John Pola
Rev 04	31/03/2026	Final	Zainab Ahmed	Nadia Eisenlohr	John Pola

List of emergency and key contacts

Position	Name	Phone
EPA pollution hotline	General Number	131 555
Fire and Rescue NSW	General Number	000 (for pollution incidents that present an immediate threat to human health or property) 1300 729 579 (for pollution incidents that do not present an immediate threat to human health or property)
Lithgow Hospital	General Number	63502300
SafeWork NSW	General Number	131 050
24-hour community information line	General Number	1800 817 711
Environment Manager	John Pola	0429 205 290
Financial Controller & Company Secretary	Diane Dibben	0412 773 255
Managing Director	David Wood	0484 623 220
Western Region Manager	Paul Glasson	0418 708 113
Engineering Project Officer	Timothy Edwards	0413 446 686
Engineering Project Officer	Julian MacPhee	0427 094 014
Environmental Representative	David Bone	0407 461 092
Lithgow City Council	General Number	02 6354 9999
Wallerawang Police	General Number	02 6355 1303
Lithgow Police	Chris Sammut	02 6352 8399

Contents

Document control	2
Version control	2
List of emergency and key contacts	3
Contents	4
Figures and Tables	5
Glossary/Abbreviations	6
1 Introduction	9
1.1 Background to the Lidsdale Ash Repository	9
1.2 Relevant project approval	10
1.3 Construction Environmental Management Plan and Sub-plans	13
1.4 Environmental management system overview	13
1.5 Interactions with other management plans and strategies	15
1.6 Reference documents	15
1.7 Endorsement and approval	16
1.7.1 Internal approval of CEMP and Sub-plans	16
1.7.2 External endorsement and approval of CEMP and sub-plans	16
2 Purpose and objectives	17
2.1 Purpose	17
2.2 Objectives and targets	17
3 Potential construction impacts	19
3.1 Indicative construction schedule	20
4 Environmental requirements	21
4.1 Regulatory requirements and compliance	21
4.1.1 Legislation and regulatory requirements	21
4.1.2 Guidelines and standards	21
4.2 Relevant Conditions of Approval	22
4.3 Compliance tracking	24
5 Environmental Management	25
5.1 Construction hours	25
5.2 Noise criteria	25
5.3 Noise control management and/or mitigation measures	26
6 Further Management Obligations	31

6.1 Environmental Noise Monitoring	31
6.2 Incidents, non-compliances and corrective action	31
6.3 Reporting	32
6.4 Review and improvement	32
6.4.1 Continuous improvement.....	33
Appendix A: ER Endorsement	34
Appendix B: Noise Monitoring Program	35
Appendix C: EPA Letter.....	40

Figures and Tables

Figure 1.1 Site location and layout	12
Figure 1.2 Environmental Management System flowchart.....	15
Table 1-1 Activities covered by the CEMP and OEMP	13
Table 1-2 Consultation requirements for CEMP and sub-plans	16
Table 1-3 Consultation outcomes for CNMP	16
Table 3-1 Construction acoustic design objectives.....	19
Table 3-2 Indicative Construction Schedule	20
Table 4-1 Relevant legislation and regulatory requirements.....	21
Table 4-2 Relevant Conditions of Approval and where they are addressed in this report	22
Table 5-1 Environmental Management Measures	27

Glossary/Abbreviations

Abbreviation	Expanded text
Approval	Approval Modification MP07_005-Mod 2
ASS	Acid Sulphate Soils
CEMP	Construction Environmental Management Plan
CEMS	Contractors Environmental Management System
Compliance audit	Verification of how implementation is proceeding with respect to a Construction Environmental Management Plan (CEMP) (which incorporates the relevant approval conditions).
CoAs	Conditions of approval
CEMP	Construction Environmental Management Plan
Minister, the	Minister of the NSW Department of Planning and Environment (or delegate)
DP&E	Department of Planning and Environment
DPHI	NSW Department of Planning, Housing and Infrastructure
EIS	Environmental Impact Statement
EEC	Endangered Ecological Community
Ecologically sustainable development	Using, conserving and enhancing the community's resources so that the ecological processes on which life depends are maintained and the total quality of life now and in the future, can be increased (Council of Australian Governments, 1992)
EPA	NSW Environment Protection Authority
EPBC-CoA	Federal Conditions of Approval under the EPBC Act
EMS	Environmental Management System
EMMs	Environmental Management Measures as outlined in the project EIS documentation.
EMP	Environmental Management Plan
Environmental aspect	Defined by AS/NZS ISO 14001:2015 as an element of an organisation's activities, products or services that can interact with the environment.
Environmental impact	Defined by AS/NZS ISO 14001:2015 as any change to the environment, whether adverse or beneficial, wholly or partially resulting from an organisation's environmental aspects.
Environmental objective	Defined by AS/NZS ISO 14001:2015 as an overall environmental goal, consistent with the environmental policy, that an organisation sets itself to achieve.
Environmental policy	Statement by an organisation of its intention and principles for environmental performance.

Environmental target	Defined by AS/NZS ISO 14001:2015 as a detailed performance requirement, applicable to the organisation or parts thereof, that arises from the environmental objectives and that needs to be set and met in order to achieve those objectives.
Environmental Representative	A suitably qualified and experienced person independent of project design and construction personnel employed for the duration of construction. The principal point of advice in relation to all questions and complaints concerning environmental performance.
EP&A Act	<i>Environmental Planning and Assessment Act 1979</i> (NSW)
EPL	Environment Protection Licence
ESCP	Erosion and Sediment Control Plan
GPM	Generator Property Management Pty Ltd
Hold point	Is a verification point that prevents work from commencing prior to approval from Roads and Maritime Services
Incident	A set of circumstances that causes or threatens to cause material harm to the environment, and/or breaches or exceeds the limits or performance measures/criteria in this approval.
KPI	Key Performance Indicator
KVAD	Kerosene Vale Ash Dam
KVAR	Kerosene Vale Ash Repository (dry stacked as on top of KVAD)
LADR	Lidsdale Ash Dam Repository
Non-compliance	An occurrence, set of circumstances or development that is a breach of this approval but is not an incident.
OEH	Office of Environment and Heritage
OEMP	Operational Environmental Management Plan
PESCP	Progressive Erosion and Sediment Control Plan
PIRMP	Pollution Incident Response Management Plan
Principal, the	GPM
POEO Act	<i>Protection of the Environment Operations Act 1997</i> (NSW)
REMM	Revised Environmental Management Measure
Roads and Maritime	Roads and Maritime Services
ROL	Road occupancy licence
SAP	Sensitive Area Plan
Secretary	Secretary of the Department of Planning or their Nominee
SSCAD	Sawyers Swamp Creek Ash Dam
SEAR's	Secretary's Environmental Assessment Requirements
SPIR	Submission and Preferred Infrastructure Report

SWMS	Safety & Environmental work method statement
TfNSW	Transport for New South Wales
WPS	Wallerawang Power Station

1 Introduction

The Lidsdale Ash Dam Repository (LADR), formerly known as the Wallerawang Ash Repository, is located at Skelly Road, Lidsdale NSW (the Site) and is approximately 15 kilometres (km) north-west of Lithgow and 2.5 km north-east of Wallerawang Power Station. The Site comprises an area of approximately 528 hectares (ha) and is situated primarily on Lot 5 of Deposited Plan (DP) 829137.

The Site includes several distinct components, including:

- The Kerosene Vale Dry Ash Repository (KVAR) and underlying former Kerosene Vale Ash Dam (KVAD).
- Sawyers Swamp Creek Ash Dam (SSCAD).
- Lidsdale Cut and adjacent asbestos landfills.
- WPS Asbestos demolition landfill south of the SSCAD

The Site location and general layout are shown in Figure 1.1.

The Site has been used since the 1950s to store ash and other wastes generated by the Wallerawang Power Station (WPS). Site operations started prior to the commencement of the *Environmental Planning and Assessment Act 1979* (EP&A Act), when the WPS and associated facilities were owned by the NSW Government.

Ownership and responsibility for the Site was transferred from Energy Australia NSW Pty Ltd to Generator Property Management Pty Limited (GPM) in September 2020. GPM's objectives at the Site include closure of the operational facilities and the rehabilitation and management of the site in general including the Kerosene Ash Repository (KVAR) and the Sawyers Swamp Creek Ash Dam (SSCAD).

Final closure of the site into a long-term rehabilitated state requires works to be undertaken to secure the KVAR and the SSCAD. Undertaking these works, including construction of reinforcement berms and a material delivery area and internal roads as well as rearrangement of water flows and reinstatement of environmental controls for historic landfill areas, are identified as construction activities and therefore need to be specifically managed.

The CEMP, along with this CNMP, has been developed to ensure construction activities are carried out responsibly and in accordance with the relevant Conditions of Approval (CoAs) and any other requirements.

GPM and its contractors are also undertaking construction and operational activities on the site simultaneously. Construction activities will be managed under the Site's Construction Environmental Management Plan (CEMP) and operational activities are being managed under the Site's Operational Environmental Management Plan (OEMP). Refer to Table 1-1 Activities covered by the CEMP and OEMP.

1.1 Background to the Lidsdale Ash Repository

The Lidsdale Site was originally farmland that was gradually turned into mining premises during the late 1800s into the early 20th century. The Kerosene Vale mines were originally a series of open cut operations that changed to underground mines using portals driven under the northern escarpment.

The original ash placement operations were at the KVAD. The mining void was filled with ash transported from the WPS as a slurry (i.e. wet ash placement). When the KVAD was full, it was capped with a clay capping and then ash placement operations began at the SSCAD, which saw wet ash placement take place from 1980 to 2003. The SSCAD is still used to manage site water requirements with water levels managed by irrigation for dust suppression and other onsite water uses to prevent discharge to Sawyers Swamp Creek. When required, water is transferred for treatment via a CIP, clarified and discharged through a licenced discharge point (LDP3). The SSCAD is a declared dam under the NSW [Dams Safety Act 2015 No 26](#) (DS Act) and is subject to regular surveillance and monitoring by certified engineers in accordance with the DS Act.

The need to further develop the KVAR area to maintain power-generation operations at WPS was identified in 2001. The existing wet ash storage area (i.e. the SSCAD) was approaching its design capacity and the placement of dry ash at the KVAR was identified as a viable alternative. Conversion from wet to dry ash placement aimed to minimise environmental and social impacts potentially resulting from heavy metal accumulation. The extent of both stages is outlined in Figure 1.1.

It is noted that the Site has recently been formally Declared under the *Contaminated Land Management Act* (CLM Act) by the EPA and is subject to a Voluntary Management Plan requiring detailed and extensive investigations that will guide long term works on the SSCAD and may require additional works on the Site that would be subject to further approval.

1.2 Relevant project approval

In 2002, Project Approval was granted by the then Minister of Planning to change from wet to dry ash-producing activities and to use the KVAR area for dry ash storage.

The placement of ash on the Repository was developed in two stages:

- Stage 1: Comprises about one third of the area associated with the repository site and located on the south-western section of the site, this area was designed to operate for a period of 5 years and reached its design capacity and has been capped.
- Stage 2: Comprises the remainder the repository site, covering an area from the open face of the Stage 1 area to the edge of the original storage area. This stage was designed to operate about 10 years, depending on actual ash production rates.

On 26 November 2008, Project Approval (07_0005) was granted by the then Minister of Planning for the extension of the existing KVAR area to permit the continued disposal of ash generated by the WPS under Part 3A (now repealed) of the *Environmental Planning and Assessment Act 1979*. The KVAR Stage 1 placement works were completed and capped in February 2009. The KVAR Stage 2 placement works commenced soon after in April 2009.

In January 2014, WPS's Unit 7 was removed from service and deregistered from the market; whilst in March 2014, Unit 8 was placed in long term storage. However, in November 2014, EnergyAustralia NSW announced that Unit 8 was to be removed from service and the WPS deregistered from the market.

WPS ceased energy production in April 2014 and is currently being decommissioned and dismantled. The bulk transport and disposal of ash to the KVAR ceased following the closure of the WPS. The Lidsdale Ash Repository is currently being managed in a care and maintenance arrangement. Environmental studies and investigations are currently underway to support GPM's safe decommissioning, demolition, rehabilitation and management of ongoing regulatory and contractual obligations associated with the Lidsdale Ash Repository area.

Modification 1 to 07_005 was approved on 9 August 2018 under section 75W of the EP&A Act. This was to allow for the importation of clean fill (virgin excavated natural material (VENM) and excavated natural material (ENM)) for use in the final shaping and capping of KVAR and SSCAD over two years. This modification included a revised project area that extended the originally approved project to include the area covered by SSCAD.

Modification 2 to 07_005 was approved on 13 October 2023 under section 96(1A) of the EP&A Act. This was to allow for the importation of fill over an additional 10 years (i.e. until 13 October 2033).

The most complete description of the onsite activities was provided in the original *Kerosene Vale Stage 2 Ash Repository Area Environmental Assessment* prepared by Parsons Brinckerhoff in April 2008. This focused on the ongoing ash management without providing any details of site rehabilitation requirements when the power station closed. However, it did include the realignment of a section of Sawyers Swamp Creek to allow the structural earthworks required to achieve an acceptable factor of safety against failure of the ash stockpiles during earthquakes. The subsequent modification applications focussed on the potential impacts of the importation of fill material, rather than on activities within the Site where the material would be utilised.

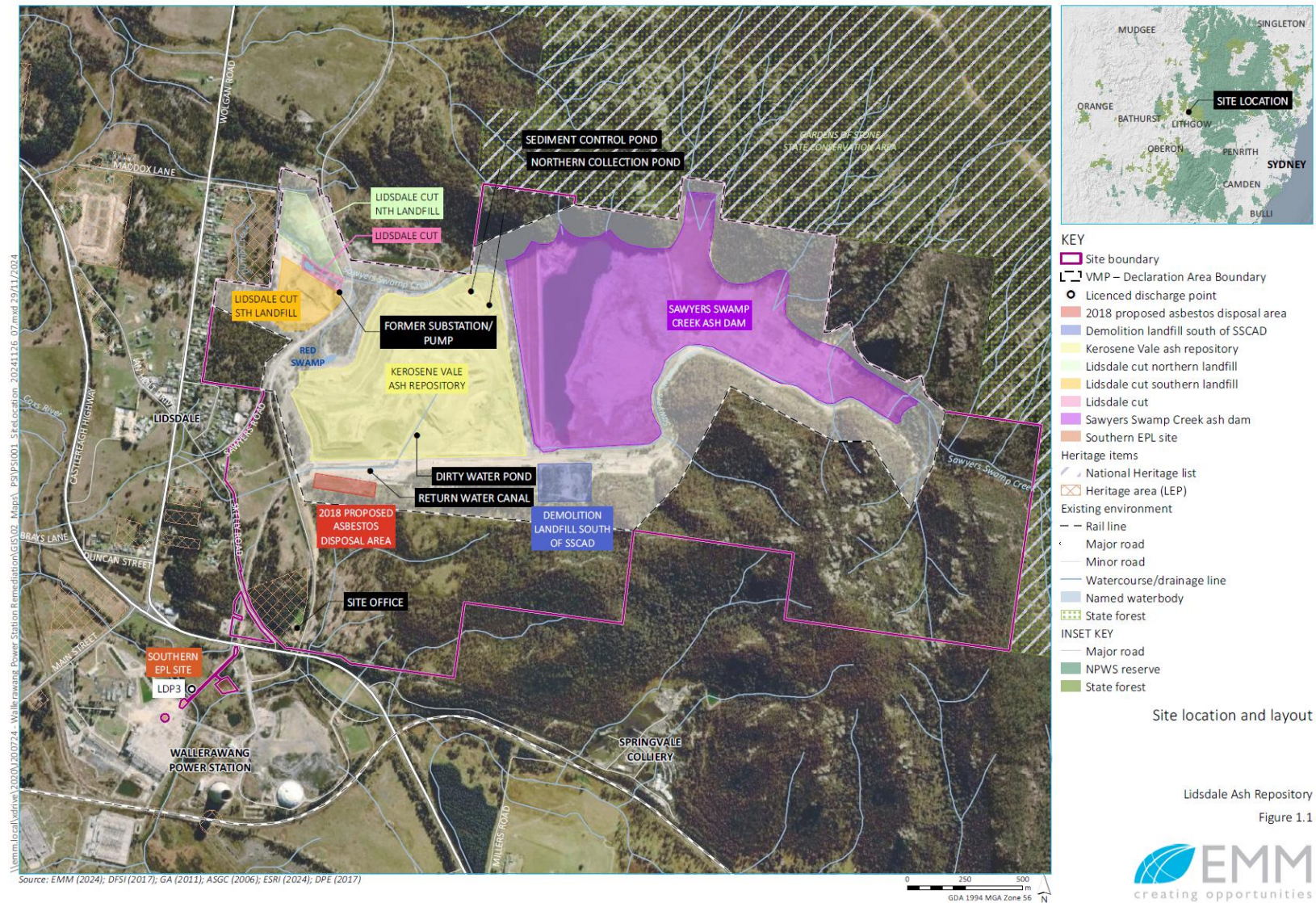


Figure 1.1 Site location and layout

1.3 Construction Environmental Management Plan and Sub-plans

CoA 6.2 requires the applicant to develop a CEMP that outlines the environmental management practices and procedures to be followed during construction, while CoA 6.3 requires the preparation and implementation of the following management plans as part of the CEMP:

- **Construction Traffic Management Plan (CTMP)** - identifies the management measures to minimise traffic impacts
- **Construction Noise Management Plan (CNMP)** - identifies the management measures to minimise construction noise impacts
- **Construction Erosion and Sediment Control Plan (CESCP)** – identifies the management measures to minimise erosion and sedimentation during construction

Given the requirement to develop these additional plans in conjunction with the CEMP, these plans are identified as sub-plans to this CEMP.

Table 1-1 provides a high-level overview of the proposed activities that are covered by the CEMP and those covered by the OEMP. Further information on the scope of this CEMP is provided in section 1.4.

Table 1-1 Activities covered by the CEMP and OEMP

Environmental Management Plan	Activities covered
CEMP – construction activities	<ul style="list-style-type: none"> • Sawyers Swamp Creek realignment • Construction of stability berms around the perimeter of the KVAR • Excavation of the former pine plantation area • Sediment controls and surface water dams associated with construction of the KVAR stability berm and realignment of the Sawyers Swamp Creek • Establishment of freshwater collection ponds on the northern edge of SSCAD • Rearrangement of water flows around the KVAR • Establishment of access roads onto the surface of the SSCAD and associated roads across the dam surface • Reinstatement of environmental controls for historic landfill areas including capping of slumped areas, reprofiling for water management and control of sediment runoff during these activities • Concurrent construction activities
OEMP – care and maintenance operations	<ul style="list-style-type: none"> • Ash management • Management of on-site water systems • Capping material haulage, placement and management • Landscaping and revegetation/rehabilitation of the site • Upgrading and maintaining internal access roads in the project area

1.4 Environmental management system overview

GPM's Environmental Management System (EMS) is based on AS/NZS ISO 14001. The ISO 14001 standard provides best practice specifications for the implementation of an EMS. An EMS provides a framework for managing the company's environmental responsibilities so that they are integrated into overall operations. The standard approach integrates environmental management and supports the company's compliance with legislated and voluntary environmental requirements, as well as continuously improving their overall environmental performance.

The relevant environmental standards ensure a consistent approach is undertaken to integrate environmental management at all levels of the organisation by:

- identifying and maintaining awareness of relevant environmental legislation
- assignment of roles and responsibilities
- establishment of procedures for internal and external communications
- establishment of procedures for monitoring and measuring environmental performance
- setting and reviewing objectives and targets for improving environmental performance
- monitoring and measuring environmental compliance and community inquiries
- setting and reviewing management system programs for achieving objectives and targets
- provision of environmental training aligned to skill requirements
- review of EMS performance for continual improvement.

This CNMP has been developed to be consistent with the relevant provisions of GPM's EMS, including approvals and license as noted above. The CEMP is also consistent with the EMS.

A summary of the EMS and its interaction with the CEMP and OEMP is provided in Figure 1.2.

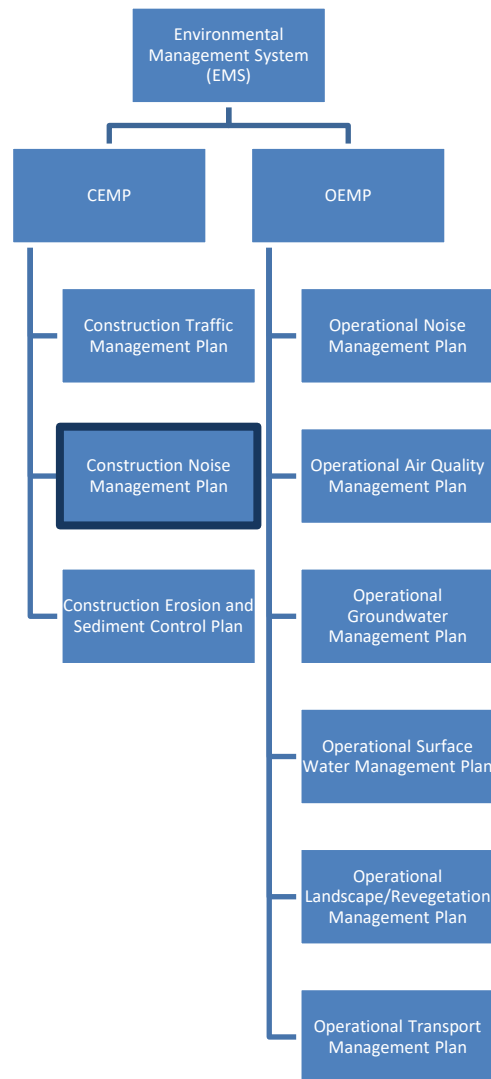


Figure 1.2 Environmental Management System flowchart

1.5 Interactions with other management plans and strategies

This CNMP (as outlined in Figure 1.2 above) is a sub-plan to the CEMP and interrelates with the other (sub) management plans set out in Section 1.3 and 1.4 above.

1.6 Reference documents

The CNMP incorporates the obligations and criteria outlined in the following documents:

- Project Approval 07_0005 (NSW Department of Planning) – 2008
- Submission Report – Statement of Commitments (Parsons Brinckerhoff 2008)
- Modification application 07_0005 Mod 1 (9 August 2018)
- Modification application 07_0005 Mod 2 (13 October 2023)
- Wallerawang Power Station to Submissions Report (EA 2018)
- Environment Protection Licence 21185 (NSW Environment Protection Authority)
- Works Approval (Water Mgt Act 2000)

1.7 Endorsement and approval

1.7.1 Internal approval of CEMP and Sub-plans

The CEMP and associated sub-plans, strategies and monitoring programs undergo ongoing review by the GPM team. Following the ongoing review and revision process, internal sign-off will be provided.

Once internal approval is received, the documents will be provided to external stakeholders (as identified in Section 1.7.2) for external consultation, once the external stakeholders are satisfied the plan is submitted to ER for endorsement. Once the endorsement has been received the CNMP will be submitted to DPHI for approval..

1.7.2 External endorsement and approval of CEMP and sub-plans

Table 1-2 below provides a summary of the relevant authority(s), council(s) and agencies that require consultation during preparation of the CEMP sub-plans and monitoring programs in accordance with the CoAs.

External distribution for consultation and approval of the CEMP, sub-plans and monitoring programs was undertaken and the CNMP was updated in consultation with the relevant external parties and was endorsed by the ER in accordance with the relevant CoA(s) (refer Table 1-2 and Table 1-3), confirming that they satisfy the requirements of the approval documentation. After this external consultation and endorsement process was complete the required documents were submitted to the Secretary for approval.

A copy of the latest ER Endorsement of the CEMP is included in Appendix A of this Plan.

Table 1-2 Consultation requirements for CEMP and sub-plans

Report	Consultation required	Relevant CoA
Construction Environmental Management Plan	Submit to Secretary for approval	6.2
Construction Traffic Management Plan	TfNSW	2.36, 2.36A, 2.36B, 6.3 (a)
Construction Noise Management Plan	EPA	6.3 (b)
Erosion and Sediment Control Plan	Not required	6.3 (c)

Table 1-3 Consultation outcomes for CNMP

Agency	Date provided	Comments	Where addressed
EPA	21/01/2025	EPA has reviewed this plan and has no comments at this stage	Not applicable

2 Purpose and objectives

2.1 Purpose

This Construction Noise Management Plan (CNMP) forms part of the Construction Environmental Management Plan (CEMP) for the Lidsdale Ash Dam Project (Project).

This Plan has been prepared to address requirements of Transport for NSW Construction Noise and Vibration Guideline (CNVG, 2024) and the Environmental Impact Assessment (Parsons Brinckerhoff, 2008) for the project. The plan describes how GPM will manage noise and vibration during construction. Operational management measures do not fall within the scope of this Plan and therefore are not included.

This Plan forms part of the suite of construction noise documents aiming to achieve the above objectives. The Plan:

- applies the Transport for NSW Industrial Noise Policy, 2000 (NSW Environment Protection Authority)(now NSW EPA [Noise Policy for Industry \(NPI\) 2017](#)), and Section 2.7 of the Project approval (MP07_0005- Mod 2) during the construction phase of the Project
- applies the principles of the NSW EPA Interim Construction Noise Guideline (ICNG, 2009).

This Plan summarises the requirements from the documents listed above and explains how they are to be applied in practice for the proposed works.

Noise reduction measures must be taken for all equipment or activities identified as potentially impacting noise sensitive receivers. Noise reduction measures should be aligned with the relevant Noise Hierarchy of Control categories, such as:

- avoid/reduce
- manage
- engineer.

Noise reduction (management and mitigation) measures are discussed in Section 5.

2.2 Objectives and targets

The CNMP is in alignment with the main objectives outlined in ICNG Section 1.3, the main objectives of the Guidelines are the following:

- Promote a clear understanding of ways to identify and minimise noise from construction works.
- Focus on applying all 'feasible' and 'reasonable' work practices to minimise construction noise impacts.
- Encourage construction to be undertaken only during the recommended standard hours unless approval is given for works that cannot be undertaken during these hours.
- Streamline the assessment and approval stages and reduce time spent dealing with complaints at the project implementation stage.
- Provide flexibility in selecting site-specific feasible and reasonable work practices in order to minimise noise impacts.

The CNMP:

- identifies sensitive receivers and noise and vibration management levels applying at each potentially affected receiver
- identifies and clarifies applicable project-specific construction noise and vibration management requirements under the ICNG and construction noise management, which may apply
- identifies the key noise and/or vibration generating construction activities
- identifies and recommend feasible and reasonable construction noise and vibration mitigation measures (both engineering and management controls)
- clarifies the requirements for all necessary noise and vibration monitoring
- references applicable communications strategies and requirements for responding to and effectively addressing any community noise complaints relating to construction noise and/or vibration
- outlines the requirements for maintaining records for noise and vibration monitoring and for community enquiries and complaints.

3 Potential construction impacts

When assessing and managing noise and vibration due to construction activities, the following general considerations apply:

- Airborne noise levels generated by the works, and how audible or intrusive they are at noise-sensitive receivers (both internal and external noise level may need to be assessed).
- Ground-borne or structure-borne noise, which is related to vibration energy being transferred through the ground and/or structures and being re-radiated as audible sound. Typically ground-borne noise is assessed inside buildings, while structure-borne noise may be a consideration inside buildings as well as externally (for example, if a structure radiates sound which is audible in the open environment, such as structure-radiated noise from a bridge or viaduct).
- Ground-borne or structural vibration, which is transmitted through the ground and/or structures. Humans can feel vibration at relatively low levels, and human comfort is an important consideration for the management of ground-borne vibration. At much higher levels, vibration can be associated with damage to structures, and even minor cosmetic damage such as development of cracks is to be avoided where possible. Other potentially vibration-sensitive items include highly vibration-sensitive equipment such as medical imaging equipment, or underground services such as buried pipes.

The Construction Noise Impact Assessment (CNIA) prepared as part of the EIS identified construction noise criteria in accordance with now Noise Policy for Industry (2017).

The acoustic design objectives for construction are presented in Table 3-1 below.

Table 3-1 Construction acoustic design objectives

Construction Period	Acoustic Design Objectives
>4 weeks	Received $L_{A10} < L_{a90} = 20 \text{ dB(A)}$
>4 weeks and <26 weeks	Received $L_{A10} < L_{a90} = 10 \text{ dB(A)}$
>26 weeks	Received $L_{A10} < L_{a90} = 5 \text{ dB(A)}$

Construction works are expected to be between 4 and 26 weeks in duration, the resultant adopted construction noise impact design limits would be:

- Site 1 Skelly Road - 46.5 dB(A) LA10 (36.5 dB(A) + 10 dB(A))
- Site 5 Woodlands - 47 dB(A) LA10 (37 dB(A) + 10 dB(A))

The potential noise impacts from construction works were assessed with respect to additional factors such as the social benefits of the activity, economic constraints, and the nature and duration of a proposed construction program.

The following construction activities were identified in the CNIA:

1. Re-alignment of the Sawyers Swamp Creek,
2. Kerosene Vale stabilisation works, such as:
 - a. construction of the stabilisation berm,

- b. excavation of the former pine plantation,
- c. relocation and construction of surface water management structures, and associated, concurrent construction activities.

All works are to be undertaken during daytime hours and were assessed to be compliant with the noise impact design limits. The assessment determined that the noise impact from the construction works would not be of sufficient noise level and duration to result in disturbance at the nearest potentially impacted receivers.

3.1 Indicative construction schedule

An indicative schedule for construction works has been provided in table below.

Table 3-2 Indicative Construction Schedule

Construction Noise Generated	Indicative schedule for construction works
Realignment Sawyers Swamp Creek	Q4 2025 or Q1 2026 (pending DPPI Approval).
Construction of the stabilisation berm	Works to recommence in 2026 under CoA 2.3 Construction Hours
Excavation of the former pine plantation area	Modification to conditions of approval required
Relocation and construction of surface water management structures	Works commenced and ongoing under CoA 2.3 Construction Hours
Concurrent construction activities	Works commenced and ongoing under CoA 2.3 Construction Hours

4 Environmental requirements

4.1 Regulatory requirements and compliance

4.1.1 Legislation and regulatory requirements

Table 4-1 details the legislation and planning instruments considered during development of this Plan.

Table 4-1 Relevant legislation and regulatory requirements

Legislation	Description	Relevance to this Plan
<i>Environmental Planning and Assessment Act 1979</i>	This Act establishes a system of environmental planning and assessment of development proposals for the State.	The approval conditions and obligations are incorporated into this CNMP.
<i>Protection of the Environment Operations Act 1997 (POEO Act)</i>	This Act includes all the controls necessary to regulate pollution and reduce degradation of the environment, provides for licensing of scheduled development work, scheduled activities and for offences and prosecution under this Act.	This Plan defines how the Project will manage works to comply with this Act. .

4.1.2 Guidelines and standards

Additional guidelines and standards to the management of noise and vibration include:

- NSW EPA Noise Policy for Industry (NPfI, 2017)
- NSW EPA Interim Construction Noise Guideline (2009)
- NSW EPA Assessing Vibration – a Technical Guideline (AVTG, 2006 – for human exposure)
- NSW EPA Road Noise Policy (2011)
- Transport for NSW (TfNSW) Infrastructure and Services Construction Noise and Vibration Strategy (I&S CNVS, 2018)
- TfNSW Roads and Maritime Services Construction Noise and Vibration Strategy (RMS CNVS, 2016)
- Australian Standard AS 2017-2016 Acoustics – Recommended design sound levels and reverberation times for building interiors
- Australian Standard AS 3671-1989 Acoustics – Road traffic noise intrusion – Building Siting and Construction (for guidance only; applies to siting of the receiver buildings)
- Australian Standard AS/NZS 2107:2016 Acoustics - Recommended design sound levels and reverberation times for building interiors
- Australian Standard AS/NZS ISO 3100:2009 Risk Management – Principals and Guidelines
- British Standard BS 6472-1992 Guide to evaluation of human exposure to vibration in buildings (1 Hz to 80 Hz)
- British Standard BS 7385:2-1993 Evaluation and measurement for vibration in buildings Part 2

- German Standard DIN 4150: Part 3-1999 Structural Vibration Part 3: Effects of Vibration on Structures.

The primary reference for managing noise and vibration from construction and maintenance is the Environment Protection Authority (EPA) *Interim Construction Noise Guideline* (“ICNG”, 2009).

4.2 Relevant Conditions of Approval

The relevant CoAs, and where they are addressed in this Sub-plan are provided in Table 4-2.

Table 4-2 Relevant Conditions of Approval and where they are addressed in this report

Relevant CoA	Condition of Approval	Where addressed in this plan
2.3	Construction activities associated with the project shall only be undertaken during the following hours: 7:00 am to 6:00 pm, Mondays to Fridays, inclusive 8:00 am to 1:00 pm on Saturdays at no time on Sundays or public Holidays.	Section 5.1 - Construction hours
2.4	Activities resulting in impulsive or tonal noise emission (such as rock breaking or rock hammering) shall be limited to 8:00 am to 12:00 pm, Monday to Saturday and 2:00 pm to 5:00 pm, Monday to Friday. The Applicant shall not undertake such activities for more than three continuous hours and must provide a minimum one-hour respite period.	Section 5.1 - Construction hours
2.5	Construction outside the hours stipulated in condition 2.3 of this approval is permitted in the following circumstances: a) where construction works do not cause audible noise at any sensitive receiver; or b) for the delivery of materials required outside these hours by the Police or other authorities for safety reasons; or c) where it is required in an emergency to avoid the loss of lives, property and/or to prevent environmental harm.	Section 5.1 - Construction hours
2.6	The hours of construction activities specified under condition 2.3 of this approval may be varied with the prior written approval of the Secretary. Any request to alter the hours of construction specified under condition 2.3 shall be: a) considered on a case-by-case basis b) accompanied by details of the nature and need for activities to be conducted during the varied construction hours c) accompanied by any information necessary for the Secretary to reasonably determine that activities undertaken during the varied construction hours will not adversely impact on the acoustic amenity of sensitive receivers in the vicinity of the site.	Section 5.1 - Construction hours

Relevant CoA	Condition of Approval	Where addressed in this plan
2.7	<p>The construction noise objective for the project is to manage noise from construction activities (as measured by a LA₁₀ (15 minute) descriptor) so as not to exceed the background LA₉₀ noise level by more than 10 dB(A) at any sensitive receiver.</p> <p>Any activities that have the potential for noise emissions that exceed the objective must be identified and managed in accordance with the Construction Noise Management Plan (as referred to under condition 6.3b) of this approval). The Applicant shall implement all reasonable and feasible noise mitigation measures with the aim of achieving the construction noise objective.</p>	Section 5.2 - Noise criteria
3.1	<p>The Applicant shall prepare and implement a Construction Noise Monitoring Program to confirm the predictions of the noise assessment detailed in the document referred to under condition 1.1 of this approval and assess compliance against the construction noise criterion stipulated in condition 2.7 of this approval. The noise monitoring program shall be prepared in consultation with, and to the satisfaction of the EPA. The monitoring program shall form part of the Construction Noise Management Plan referred to in condition 6.3b) of this approval and must include monitoring of the construction noise generated during:</p> <ol style="list-style-type: none"> the realignment Sawyers Swamp Creek construction of the stabilisation berm excavation of the former pine plantation area relocation and construction of surface water management structures concurrent construction activities. <p>The Applicant shall forward to the EPA and the Secretary a report containing the results of each noise assessment and describing any non-compliance within 14 days of conducting a noise assessment.</p>	Appendix B Noise Monitoring Program
6.3	<p>b) a Construction Noise Management Plan to detail how construction noise impacts would be minimised and managed. The Strategy shall be developed in consultation with, and to the satisfaction of, the EPA and shall include, but not necessarily be limited to:</p>	Section 1.7.2 - External endorsement and approval of CEMP and sub-plans
	<p>i) details of construction activities and an indicative schedule for construction works</p>	Section 1.3 - Construction Environmental Management Plan and Sub-plans Section 5.1 - Construction hours
	<p>ii) identification of construction activities that have the potential to generate noise impacts on sensitive receivers,</p>	Section 3 Potential construction impacts
	<p>iii) procedures for assessing noise levels at sensitive receivers and compliance;</p>	Appendix B Noise Monitoring Program
	<p>iv) details of the reasonable and feasible actions and measures to be implemented to minimise noise impacts and, if any noise exceedance is detected, how any non-compliance would be rectified; and</p>	Table 5-1 Environmental Management Measures Section 5.3 - Noise control management and/or mitigation measures

Relevant CoA	Condition of Approval	Where addressed in this plan
	v) procedures for notifying sensitive receivers of construction activities that are likely to affect their noise amenity.	Table 5.1 Section 5.3 - Noise control management and/or mitigation measures

4.3 Compliance tracking

CoA 4.2 mandates a compliance tracking program to track compliance with the requirements before commencing construction. A compliance tracking tool has been prepared for internal use by GPM to ensure effective and efficient tracking of compliance.

5 Environmental Management

5.1 Construction hours

In accordance with CoA 2.3, construction activities associated with the project will only be undertaken during the hours listed below:

- 7:00 am to 6:00 pm, Mondays to Fridays.
- 8:00 am to 1:00 pm on Saturdays.
- At no time on Sundays or public holidays.

In accordance with CoA 2.4, activities resulting in impulsive or tonal noise emission (such as rock breaking or rock hammering) will be limited to:

- 8:00 am to 12:00 pm, Monday to Saturday and
- 2:00 pm to 5:00 pm, Monday to Friday.
- These activities are further restricted to no more than three (3) continuous hours with a minimum of one (1) hour respite period between activities.

Construction activities proposed outside of these hours, are only permitted under the following circumstances:

- where construction works do not cause audible noise at any sensitive receiver; or
- for the delivery of materials required outside these hours by the Police or other authorities for safety reasons; or
- where it is required in an emergency to avoid the loss of lives, property and/or to prevent environmental harm.

CoA 2.6 allows construction hours specified under Condition 2.3 to be varied with the Secretary's prior written approval. Requests must be considered individually and include justification for the change, details of the activities and their necessity, and evidence that the altered hours will not negatively affect the acoustic amenity of nearby sensitive receivers.

The construction activities outlined in Section 1.3 will be ongoing.

5.2 Noise criteria

In accordance with CoA 2.7 the noise objective for the project is to manage noise from construction activities (as measured by a $L_{A10(15\text{ minute})}$ descriptor) so as not to exceed the background L_{A90} noise level by more than 10 dB(A) at any sensitive receiver.

Additionally, in accordance with Environmental Protection Licence 21185, noise from the Kerosene Vale Ash Repository premise must not exceed 40 dB(A) L_{Aeq} (15-minute) at the nearest sensitive receiver.

Compliance is to be determined at the most affected location within the residential boundary, or within 30 m of a dwelling in rural settings, with adjustments applied for tonal, impulsive, or intermittent noise in accordance with the NSW Industrial Noise Policy.

Noise limits associated with the EPL apply under specified meteorological conditions, including moderate wind and temperature inversion scenarios, and do not apply where a negotiated noise agreement exists between the licensee and affected residents, provided the EPA is notified.

5.3 Noise control management and/or mitigation measures

Management actions to minimise construction noise impacts are provided in Table 5-1. Additionally, further management system activities are detailed in Section 6.

Table 5-1 Environmental Management Measures

Relevant aspect	Management measure	Source of requirement	Frequency	Relevant records	Responsibility
Notification	Sensitive receivers will be notified of construction activities that are likely to affect their noise amenity. Notifications will include letterbox drops carried out between 5 and 14 days prior to the commencement of the construction activities expected to impact sensitive receivers.	CoA 6.3b) v	As required	Consultation records & Quarterly monitoring reports	GPM
Permissible working hours	Construction activities associated with the project will only be undertaken during the following hours: a) 7:00 am to 6:00 pm, Mondays to Fridays, inclusive; b) 8:00 am to 1:00 pm on Saturdays; and c) at no time on Sundays or public holidays.	CoA 2.3	At all times during construction	Noise monitoring records	GPM
Permissible working hours	Activities resulting in impulsive or tonal noise emission (such as rock breaking or rock hammering) will be limited to <ul style="list-style-type: none"> 8:00 am to 12:00 pm, Monday to Saturday and 2:00 pm to 5:00 pm, Monday to Friday. GPM will not undertake such activities for more than three continuous hours and must provide a minimum one-hour respite period.	CoA 2.4	Daily	Site inspection checklist	Contractor
Permissible equipment	All equipment and plant used on the Lidsdale Ash Repositories will <ul style="list-style-type: none"> meet the typical noise levels presented in AS 2436. be properly maintained, kept in good working order, and operated efficiently. Unusually noisy equipment will be investigated and rectified as soon as practicable.	CoA 3.1	Daily	Site inspection checklist	Contractor
General requirement	The distance between noisy plant, equipment and sensitive receptors will be maximised where practicable.	Best Practice	Daily	Site inspection checklist	Contractor
Training and Inductions	Noise issues shall be discussed as part of routine 'toolbox' talks to keep staff aware of current care and maintenance activities and potential noise issues.	CoA 3.1	Daily or as required	Toolbox talk meeting minutes	Contractor

Relevant aspect	Management measure	Source of requirement	Frequency	Relevant records	Responsibility
Training and Inductions	Noise reduction techniques applied to trucks will be routinely inspected and maintained to ensure required operational efficiency.	CEMP	As required by manufacturers or following complaints	Site inspection checklist	Contractor
Noise Criteria	Works will be planned and implemented to achieve the construction noise emission objectives: <ul style="list-style-type: none"> background LA90 noise level by more than 10 dB(A) at any sensitive receiver, as measured by a LA10 (15 minute) descriptor. 	CoA 2.7	During normal conditions	Noise monitoring records	GPM
Monitoring	Attended noise monitoring will be conducted periodically (quarterly) at sensitive receivers, following complaints, or when new/amended construction activities are identified as high-risk activities. Ambient noise monitoring will occur at residential locations identified in the Noise Monitoring Program (including Skelly Road, Neubeck Street, Wolgan Road) to record 15-minute noise levels. Note: See the Noise Monitoring Program, Appendix B, for details.	CoA 6.3b)	As required in response to complaints or change in construction.	Quarterly noise monitoring reports	GPM Specialised consultant/ Contractor

Relevant aspect	Management measure	Source of requirement	Frequency	Relevant records	Responsibility
Reporting	<p>Non-compliances</p> <p>The Secretary will be notified in writing via the Major Projects website within seven (7) days of GPM becoming aware of any non-compliance.</p> <p>Notifications will identify the development and application number, specify the relevant approval condition, describe the nature and cause of the non-compliance (if known), and outline actions taken or proposed to address it.</p> <p>Incidents</p> <p>The Secretary will be notified immediately upon GPM becoming aware of any incident.</p> <p>Notifications will include the project and application number; date, time, and location of the incident; a brief description and rationale for its classification; how and when it was detected; any actual or potential non-compliance; immediate and planned corrective actions; and a project contact for follow-up.</p> <p>Notifications are required even if prior notifications under Condition 7.1 were not provided or if it is later determined that an incident did not occur.</p> <p>Within 30 days of the incident (or as otherwise agreed by the Secretary), a detailed Incident Report will be submitted to the Secretary and any relevant public authorities.</p> <p>The report will summarise the incident, present investigation findings including the cause, outline corrective and preventative actions, and document communications with stakeholders.</p> <p>All subsequent notifications and reports must comply with the requirements set out in Appendix 3 of the Project Approval.</p>	<p>CoA C.1, C.2, 7.1, 7.2</p> <p>Planning Approval (07_0005) Appendix 3</p>	As required	If required	GPM
Reporting	<p>The Annual Review will be submitted to the Secretary complete with quarterly construction noise monitoring data gathered throughout the year.</p> <p>The EPA and the Planning Secretary will receive the noise monitoring report containing the results of each noise assessment and describing any non-compliance within 14 days of conducting a noise assessment.</p>	<p>CoA 7.3, CoA 3.1</p>	Annually	Annual Review	GPM

Relevant aspect	Management measure	Source of requirement	Frequency	Relevant records	Responsibility
Reporting	An Annual Return will be submitted in accordance with EPL 21185 and the EPA publication A Guide to Licensing within 60 days of each reporting period. With an anniversary date of 14 September, the Return is due by 13 November each year and it must include a Statement of Compliance and a summary of all required monitoring (including complaint records) in line with condition R1 of the licence.	EPL 21185	Annually	Annual Return	GPM
Review and Improvement	<p>GPM will review and, if necessary, revise the Construction Noise Management Plan and associated Monitoring Program to the satisfaction of the Secretary within three months of:</p> <ul style="list-style-type: none"> the submission of an incident report under CoA 7.1 the submission of an Annual Review under CoA 7.3 the submission of an Independent Environmental Audit under CoA 4.2 the modification of the conditions of this approval (unless the CoAs require otherwise). <p>Where this review leads to revisions in any such document, then within 4 weeks of the review, GPM will submit the revised document to the Secretary for approval, unless otherwise agreed with the Secretary.</p>	CoAs 2.18, 3.2 and 6.6	As required	Noise Management Sub-Plan revision	GPM

6 Further Management Obligations

6.1 Environmental Noise Monitoring

Monitoring for the project will be undertaken at designated receiver locations in Lidsdale, NSW, with positions outlined in Table B1 and Figure B1 in the Construction Noise Monitoring Program (Appendix B). These monitoring sites include Skelly Road, the corner of Sawyers Road and Skelly Road, Maddox Lane, and the end of Nuebeck Street.

Compliance with construction noise criteria will be determined by ensuring construction noise does not exceed the background LA90 noise level by more than 10 dB(A) over a 15-minute period at sensitive receivers.

Where activities risk exceeding these objectives, management measures from the CNMP will be applied. Complaint-driven monitoring will be conducted at the complainant's property or the nearest representative site.

The methodology for monitoring draws on the Construction Noise Impact Assessment (CNIA), which established background noise levels using both long-term unattended and operator-attended noise monitoring. Equipment used for the CNIA complied with Australian Standards and was NATA-certified, and measurements were representative of local conditions and accounted for influences such as traffic from the Castlereagh Highway, WPS industrial operations, and natural sources like wind through vegetation. Noise levels showed typical daily patterns, with quieter night periods but elevated evening levels due to road traffic. Attended monitoring followed AS1055 and EPA requirements, with specific observations of truck pass-bys and industrial hum from WPS operations.

Construction work hours are restricted to weekdays 7:00 am–6:00 pm, Saturdays 8:00 am–1:00 pm, with no work permitted on Sundays or public holidays.

Noisy activities like rock breaking are limited to specific times, and continuous work cannot exceed three hours without at least one-hour respite. Noise monitoring will be carried out quarterly during construction works, specifically ensuring that, in accordance with CoA 3.1, construction noise monitoring is undertaken during the following construction activities:

- the realignment Sawyers Swamp Creek;
- construction of the stabilisation berm;
- excavation of the former pine plantation area;
- relocation and construction of surface water management structures; and
- concurrent construction activities.

The results will be compiled into reports submitted to the NSW EPA and the Planning Secretary

Any non-compliance shall be reported within prescribed timeframes, and additional monitoring will be triggered in response to community complaints.

6.2 Incidents, non-compliances and corrective action

The following definitions are relevant:

- **'Incidents'** are defined as: "A set of circumstances that causes or threatens to cause material harm to the environment, and/or breaches or exceeds the limits or performance measures/criteria in this approval."

- **'Non-compliances'** are defined as: "An occurrence, set of circumstances or development that is a breach of this approval but is not an incident."

All non-compliances will be recorded in the appropriate registers and stored electronically i.e. site inspection checklists, auditing reports, complaints register. The non-compliance will be investigated and managed by the Environment Manager (or delegate) until compliance is achieved.

If a noise exceedance is recorded, the result will be checked and verified, the source will be investigated / identified, and controls applied. Corrective measures may include limiting simultaneous noisy works, installing, relocating or maintaining equipment, or rescheduling high-noise activities to less sensitive times. Toolbox talks and closer supervision may also be required to reinforce best practice.

Incident and non-compliance response and notification is outlined in Section 2.10 of the CEMP. Incident notification to the Department will be in writing via the Major Projects website immediately after GPM becomes aware of an incident, in accordance with CoA 7.1. Non-compliance notification to the Department will be in writing via the Major Projects website within seven days after GPM becomes aware of any non-compliance, in accordance with CoA 7.2.

Community engagement and follow-up monitoring may be required depending on the level of impact. Additional attended monitoring will be conducted to confirm the effectiveness of any additional controls. All actions will be documented in a Corrective Action Register and reported to Regulators where required. Corrective actions will be recorded on the site inspection checklist as per Appendix A of the CEMP.

6.3 Reporting

Environmental monitoring for the Lidsdale Ash Repository area is designed to comply with the requirements of statutory approvals and provide an analysis of the condition of the environment surrounding the works.

An overview of the environmental monitoring activities for the project area specified under Section 4.3 of the CEMP.

Quarterly noise monitoring reports will be prepared during construction works. These monitoring reports will be forwarded to DPHI and EPA within 14 days of conducting noise monitoring.

Further monitoring will also be undertaken in the event of complaints being raised, that are relevant to construction noise.

Noise monitoring results will be incorporated into the Annual Environmental Management Report (AEMR) which will be submitted to the Secretary each year.

An Annual Return shall be submitted in accordance with EPL 21185 and the EPA publication *A Guide to Licensing* within 60 days of each reporting period. With an anniversary date of 14 September, the Return is due by 13 November each year and it must include a Statement of Compliance and a summary of all required monitoring (including complaint records) in line with condition R1 of the licence.

6.4 Review and improvement

A review of the CEMP, sub-plans (including this CNMP) and monitoring programs will be undertaken to determine the efficiency of the plans and monitoring programs and whether any changes are required to ensure compliance.

Circumstances which may trigger a review include:

- changes to design, construction, work methods, legislation, or policy
- incidents, complaints or non-compliance
- changes identified by continuous improvement
- changes to key management plans that are relevant
- where additional monitoring measures are identified in annual reviews or audits.

In addition, and in accordance with CoA 6.6, GPM will review and, if necessary, revise the studies, strategies and plans required under the conditions of approval to the satisfaction of the Secretary within three months of:

- the submission of an incident report under CoA 7.1
- the submission of an Annual Review under CoA 7.3
- the submission of an Independent Environmental Audit under CoA 4.2
- the modification of the conditions of this approval (unless the CoAs require otherwise).

Where this review leads to revisions in any such document, then within 4 weeks of the review, GPM will submit the revised document to the Secretary for approval, unless otherwise agreed with the Secretary.

A copy of the updated plans and changes will be distributed to all relevant personnel and discussed at pre start and toolbox talks.

6.4.1 Continuous improvement

Continuous improvement of this Plan will be achieved by the ongoing evaluation of environmental management performance against environmental policies, objectives and targets for the purpose of identifying opportunities for improvement.

Appendix A: ER Endorsement

31 March 2026

John Pola
Environmental Manager
Generator Property Management
110 Skelly Road
Lidsdale NSW 2790

**Re: MP07_0005 - Wallerawang Ash Dam Areas - Environmental Representative Endorsement
- Construction Noise Management Plan Rev 4**

Dear John,

Following a review of the documents provided for the Construction Noise Management Plan (CNMP) Rev 4 following consultation, I can provide the following endorsement.

The CNMP Rev 4 has been reviewed against the Mod 2 Consolidated Conditions of Approval, in particular Condition 6.5a. Consultation with NSW EPA is complete for this plan and has been incorporated in this document. DPHI comments have been addressed following consultation.

All conditions of approval and mitigation measures are contained in the CNMP Rev 4.

The document is endorsed for submission to DPHI for approval.

Yours sincerely



David Bone
Independent Environmental Representative
dbone@emmconsulting.com.au

Appendix B: Noise Monitoring Program

1.0 Introduction

The purpose of this Program is to confirm the predictions of the noise assessment detailed in the EIS prepared by Parson Brinckerhoff (April, 2008) and describe a method for how these predictions will be confirmed.

The Program has been developed in accordance with CoA 3.1, which states:

Construction Noise Monitoring

3.1 *The Applicant shall prepare and implement a Construction Noise Monitoring Program to confirm the predictions of the noise assessment detailed in the document referred to under condition 1.1 of this approval and assess compliance against the construction noise criterion stipulated in condition 2.7 of this approval. The noise monitoring program shall be prepared in consultation with, and to the satisfaction of the EPA. The monitoring program shall form part of the Construction Noise Management Plan referred to in condition 6.3b) of this approval and must include monitoring of the construction noise generated during:*

- a) *the realignment Sawyers Swamp Creek;*
- b) *construction of the stabilisation berm;*
- c) *excavation of the former pine plantation area;*
- d) *relocation and construction of surface water management structures; and*
- e) *concurrent construction activities.*

The Applicant shall forward to the EPA and the Secretary a report containing the results of each noise assessment and describing any non-compliance within 14 days of conducting a noise assessment.

The Program addresses potential noise impacts on sensitive receivers arising from:

1. Re-alignment of the Sawyers Swamp Creek,
2. Kerosene Vale stabilisation works, such as
 - a. construction of the stabilisation berm,
 - b. excavation of the former pine plantation,
 - c. relocation and construction of surface water management structures, and associated, concurrent construction activities.

The Noise Monitoring Program has been designed to address complaint investigations, ongoing monitoring, and post-commissioning requirements. It has been developed in consultation with the NSW EPA.

Whilst the NSW EPA do not generally provide confirmation that Plans, Reports or Programs are to their 'satisfaction', they did confirm that they have no further comments on the Program. A copy of the EPA's consultation letter is provided in Appendix C.

2.0 Monitoring Criteria and Locations

In accordance with CoA 2.7 the noise objective for the project is to manage noise from construction activities (as measured by a LA10 (15 minute) descriptor) so as not to exceed the background LA90 noise level by more than 10 dB(A) at any sensitive receiver.

Additionally, in accordance with Environmental Protection Licence 21185, noise from the Kerosene Vale Ash Repository Premise is not to exceed 40 dB(A) LAeq (15-minute) at the nearest sensitive receiver.

Compliance is to be determined at the most affected location within the residential boundary, or within 30 m of a dwelling in rural settings, with adjustments applied for tonal, impulsive, or intermittent noise in accordance with the NSW Industrial Noise Policy.

Noise limits associated with the EPL apply under specified meteorological conditions, including moderate wind and temperature inversion scenarios, and do not apply where a negotiated noise agreement exists between the licensee and affected residents, provided the EPA is notified.

Site monitoring locations are detailed in Table B1 and shown on Figure B1. It should be noted that Figure B1 shows actual monitoring positions, not necessarily the location of residences.

Table B1 Attended noise monitoring locations

Descriptor	Description	Coordinates (MGA 56)	
		Easting	Northing
Location A	Skelly Road, Lidsdale NSW	229052	6301209
Location B	Corner Sawyers Road and Skelly Road, Lidsdale NSW	228899	6301470
Location C	End of Nuebeck Street, Lidsdale NSW	228982	6301813
Location D	Maddox Lane, Lidsdale, NSW	229111	6302676

Noise monitoring for the determination of compliance with the construction noise criterion will be undertaken at the identified receiver locations.

Noise monitoring as part of complaint investigation will be undertaken at the complainant property or nearest representative location.

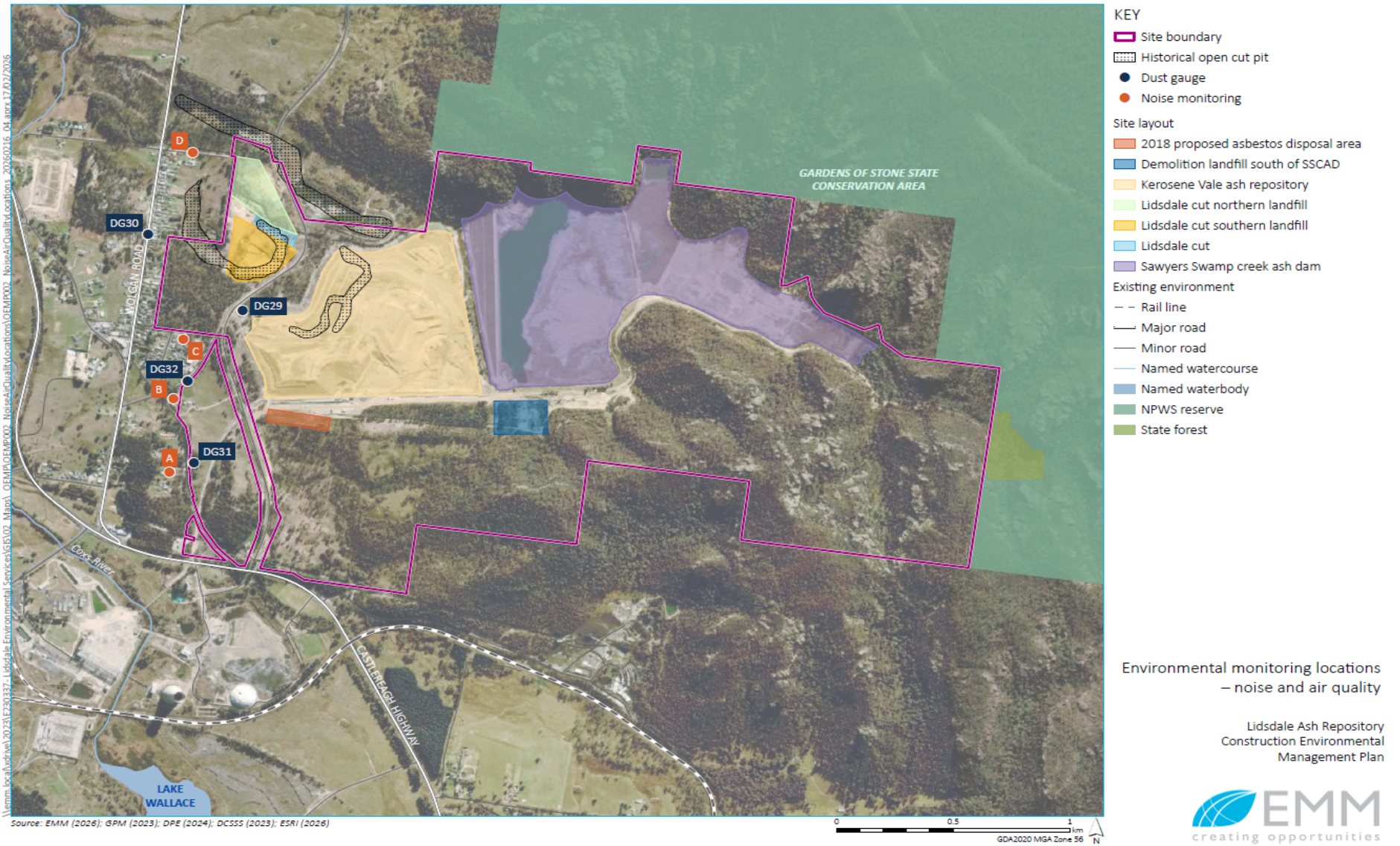


Figure B1 Environmental monitoring locations

3.0 Methodology

Attended environmental noise monitoring will be done in general accordance with Australian Standard AS1055 'Acoustics, Description and Measurement of Environmental Noise' and relevant NSW EPA requirement.

Attended noise monitoring will be conducted during the day and evening period at each location while there are construction works occurring. The attended noise monitoring instruments shall be set on A-weighted, fast response and noise levels will be logged over fifteen-minute statistical intervals. The instrument set shall comply with AS1259 Sound Level Meters. Atmospheric conditions will be measured at each monitoring location.

Pre-measurement and post-measurement calibrations will be carried out to determine any significant variances observed in the reference signal. NATA calibration of sound level meters is to occur every two years and is not tied to the measurement period. Calibrators are to be NATA calibrated yearly.

A list of plant and machinery that were active at the time of monitoring will be reviewed alongside noise monitoring results to confirm the predictions of the CNIA.

4.0 Frequency

Noise monitoring will be carried out at least quarterly during construction works, specifically ensuring that, in accordance with CoA 3.1, construction noise monitoring is undertaken during the following construction activities:

- the realignment Sawyers Swamp Creek;
- construction of the stabilisation berm;
- excavation of the former pine plantation area;
- relocation and construction of surface water management structures; and
- concurrent construction activities.

Monitoring will be undertaken will also be undertaken in response to complaints.

5.0 Reporting

A Noise Monitoring Report, detailing the results of each assessment and identifying any non-compliance, will be submitted to the NSW EPA and the NSW DPHI Planning Secretary within 14 days of completing the assessment.

The Secretary will be notified in writing via the Major Projects website within 7 days of GPM becoming aware of any non-compliance.

If required, further noise monitoring will be undertaken in the event of adverse community comment or complaint from construction noise from the site.

Appendix C: EPA Letter



Our ref: DOC25/12774-1

John Pola
Safety and Environment Manager
Generator Property Management Pty Ltd

By email: john.pola@gpm.com.au

Dear John,

**POST APPROVAL MANAGEMENT PLANS – KEROSENE VALE ASH REPOSITORIES
Generator Property Management – EPL 21185**

I refer to your request via the Department of Planning, Housing and Infrastructure (DPHI) for advice from the Environment Protection Authority (EPA) on the Construction and Operational Noise Management Plans, and the Air Quality Management Plan for the former Kerosene Vale Ash Repositories site (the Premises), Environment Protection Licence (EPL 21185).

In preparing this advice, the EPA has included a review of the following documents:

- *'Generator Property Management: Construction & Operational Noise Management Plan – Lidsdale Ash Repository 2024, November 2024'*.
- *'Generator Property Management: Operational Air Quality Management Plan – Lidsdale Ash Repository 2024, November 2024'*.

For your information, the EPA does not endorse Environmental Management Plans (EMPs) given the role of the EPA in developing conditions and criteria for environmental protection and management. The EPA does however encourage the development of EMPs and programs to ensure that proponents have determined how they will meet their statutory obligations and environmental objectives as specified by any Project Approval and/or conditions of an environment protection licence.

The EPA has reviewed the management plans as provided and has no comments at this stage. The EPA will continue to review any additional management plans as required.

If you have any further questions about this matter, please contact Allan Adams, Senior Operations Officer, Environment Protection Authority on 6333 3804, or at info@epa.nsw.gov.au.

Yours sincerely,

LUCY APPS
Unit Head
Environment Protection Authority

21 January 2025

NSW Environment Protection Authority
As the environmental steward and regulator of our State we are committed to a sustainable future.
Join us on our mission to protect tomorrow together.

Phone:
131 555
Email:
info@epa.nsw.gov.au
Website:
epa.nsw.gov.au

Visit:
6 Parramatta Square
10 Darcy Street
Parramatta NSW 2150
Mail:
PO Box 1388, Bathurst
NSW 2795

