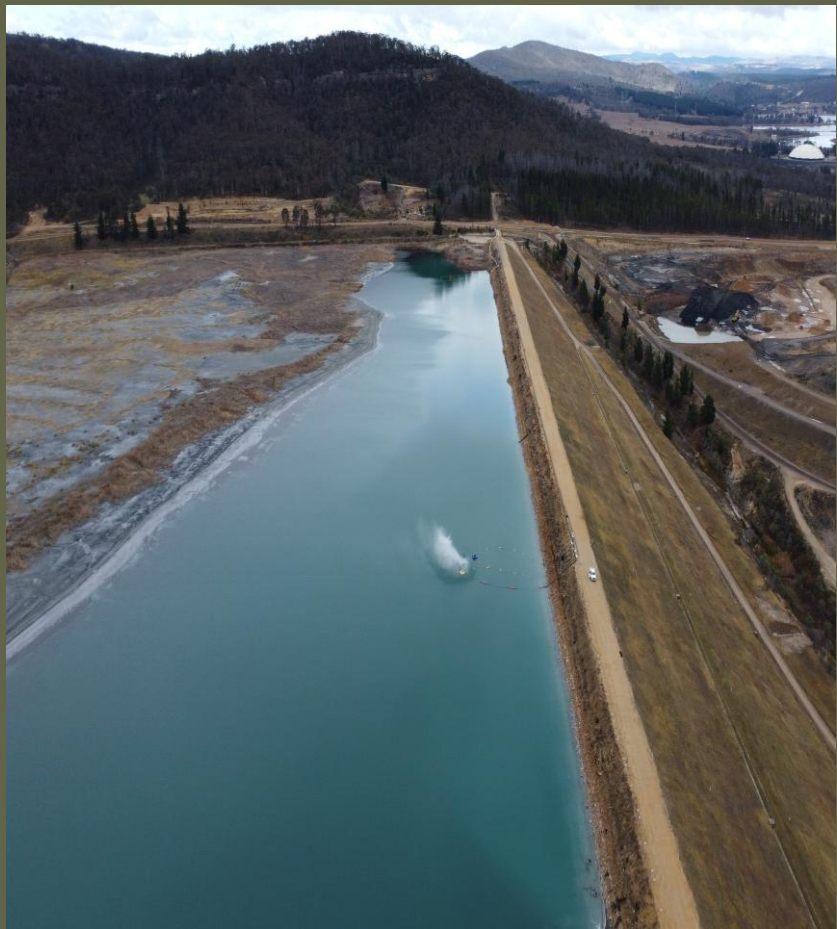



Operational Noise Management Plan

Lidsdale Ash Repository 2026



GPM

Document control

Title	Operational Noise Sub-plan - Lidsdale Ash Repository 2025
Approved by GPM Environment Manager	John Pola
Signed	
Dated	31 st March 2026

Version control

Revision	Date	Description	Author	Reviewer	Approval
Rev 01	19/12/2024	Draft	Sofia Stergio	Philip Towler	John Pola
Rev 02	28/01/2025	Update consultation register	Nadia Eisenlohr	Daniel Keegan	John Pola
Rev03	14/10/2025	Updated post DPHI comments	Zainab Ahmed Nadia Eisenlohr	Tracey Doczy	John Pola
Rev 04	18/02/2026	DPHI additional comments	Zainab Ahmed Nadia Eisenlohr	Tracey Doczy	John Pola
Rev 05	31/03/2026	Final	Zainab Ahmed Nadia Eisenlohr	Tracey Doczy	John Pola

List of emergency and key contacts

Position	Name	Phone
EPA pollution hotline		131 555
Fire and Rescue NSW		000 (for pollution incidents that present an immediate threat to human health or property) 1300 729 579 (for pollution incidents that do not present an immediate threat to human health or property)
Lithgow Hospital		02 6350 2300
SafeWork NSW		131 050
24-hour community information line		1800 817 711
Environment Manager	John Pola	0429 205 290
Financial Controller & Company Secretary	Diane Dibben	0412 773 255
Managing Director	David Wood	0484 623 220
Western Region Manager	Marlon Frost	0423 127 030
Engineering Project Officer	Timothy Edwards	0413 446 686
Engineering Project Officer	Julian MacPhee	0427 094 014
Environmental Representative	David Bone	0407 461 092
Lithgow City Council	General Number	02 6354 9999
Wallerawang Police	General Number	02 6355 1303
Lithgow Police	Chris Sammut	02 6352 8399

Contents

Document control	2
Version control	2
List of emergency and key contacts	3
Contents	4
Figures and Tables	5
Glossary/Abbreviations	6
1 Introduction	8
1.1 Background to the Lidsdale Ash Repository	8
1.2 Relevant project approval	9
1.3 Operational Environmental Management Plan and Sub-plans	12
1.4 Environmental management system overview	13
1.5 Interactions with other management plans and strategies	14
1.6 This CEMP Reference documents	14
1.7 Management Plan Consultation and Approval Process	15
2 Purpose and Objectives	16
2.1 Purpose	16
2.2 Objectives	16
2.3 Targets and Indicators	16
2.4 Permissible Working Hours	16
2.5 Notification for out of hours work	17
3 Environmental requirements	18
3.1 Relevant Conditions of Approval	18
3.2 Compliance tracking	28
4 Environmental management	29
4.1 Operational Noise Criteria	29
4.2 Management measures	29
5 Further Management Obligations	42
5.1 Monitoring	42
5.2 Incidents and non-compliances	42
5.3 Reporting	43
5.4 Review and improvement	44
5.4.1 Update and amendment	44
5.5 Complaint Management	44

Appendix A: Operational Noise Monitoring Program..... 46

 Introduction 47

 Site context and surrounding environment 47

 Operational noise limits and compliance requirements..... 48

 Methodology 48

 Locations..... 49

 Frequency 51

 Reporting 51

Appendix B: ER Endorsement of ONMP 52

Appendix C: EPA Consultation Letter 53

Figures and Tables

Figure 1.1 Site location and layout. 11

Figure 1.2 Environmental Management System flowchart..... 14

Table 1.1. Activities covered by the CEMP and OEMP 12

Table 1.2 Consultation requirements for OEMP and sub-plans..... 15

Table 1.3 Consultation outcomes for ONMP 15

Table 3.1 Relevant Conditions of Approval and where they are addressed in this report 19

Table 4.1 Environmental Management Measures 30

Glossary/Abbreviations

Abbreviation	Expanded text
Approval	Approval Modification MP07_005-Mod 2
CEMP	Construction Environmental Management Plan
CEMS	Contractors Environmental Management System
CoAs	Conditions of approval
Minister, the	Minister of the NSW Department of Planning and Environment (or delegate)
DP&E	Department of Planning and Environment
DPHI	NSW Department of Planning, Housing and Infrastructure
EIS	Environmental Impact Statement
EEC	Endangered Ecological Community
EPA	NSW Environment Protection Authority
EPBC-CoA	Federal Conditions of Approval under the EPBC Act
EMS	Environmental Management System
Environmental aspect	Defined by AS/NZS ISO 14001:2015 as an element of an organisation's activities, products or services that can interact with the environment.
Environmental impact	Defined by AS/NZS ISO 14001:2015 as any change to the environment, whether adverse or beneficial, wholly or partially resulting from an organisation's environmental aspects.
Environmental incident	A set of circumstances that causes or threatens to cause material harm to the environment, and/or breaches or exceeds the limits or performance measures/criteria in this approval.
Environmental objective	Defined by AS/NZS ISO 14001:2015 as an overall environmental goal, consistent with the environmental policy, that an organisation sets itself to achieve.
Environmental policy	Statement by an organisation of its intention and principles for environmental performance.
Environmental target	Defined by AS/NZS ISO 14001:2015 as a detailed performance requirement, applicable to the organisation or parts thereof, that arises from the environmental objectives and that needs to be set and met in order to achieve those objectives.
ER	Environmental Representative: A suitably qualified and experienced person independent of project design and construction personnel employed for the duration of construction. The principal point of advice in relation to all questions and complaints concerning environmental performance.
EP&A Act	<i>Environmental Planning and Assessment Act 1979</i> (NSW)
EPL	Environment Protection Licence
ESCP	Erosion and Sediment Control Plan

GPM	Generator Property Management Pty Ltd
KPI	Key Performance Indicator
KVAD	Kerosene Vale Ash Dam
KVAR	Kerosene Vale Ash Repository (dry stacked as on top of KVAD)
LADR	Lidsdale Ash Dam Repository
Non-compliance	An occurrence, set of circumstances or development that is a breach of this approval but is not an incident.
OEH	Office of Environment and Heritage
PESCP	Progressive Erosion and Sediment Control Plan
Principal, the	GPM
POEO Act	<i>Protection of the Environment Operations Act 1997</i> (NSW)
SAP	Sensitive Area Plan
Secretary	Secretary of the Department of Planning or their Nominee
SSCAD	Sawyers Swamp Creek Ash Dam
WPS	Wallerawang Power Station

1 Introduction

The Lidsdale Ash Dam Repository (LADR), formerly known as the Wallerawang Ash Repository, is located at Skelly Road, Lidsdale NSW (the Site) and is approximately 15 kilometres (km) north-west of Lithgow and 2.5 km north-east of Wallerawang Power Station. The Site comprises an area of approximately 528 hectares (ha) and is situated primarily on Lot 5 of Deposited Plan (DP) 829137.

The Site includes several distinct components, including:

- The Kerosene Vale Dry Ash Repository (KVAR) and underlying former Kerosene Vale Ash Dam (KVAD)
- Sawyers Swamp Creek Ash Dam (SSCAD)
- Lidsdale Cut and adjacent asbestos landfills
- Demolition landfill south of the SSCAD.

The site location and general layout are shown in Figure 1.1.

The Site has been used since the 1950s to store ash and other wastes generated by the Wallerawang Power Station (WPS). Site operations started prior to the commencement of the *Environmental Planning and Assessment Act 1979* (EP&A Act), when the WPS and associated facilities were owned by the NSW Government.

Ownership and responsibility for the Site was transferred from Energy Australia NSW Pty Ltd to Generator Property Management Pty Limited (GPM) in September 2020. GPM's objectives at the Site include closure of the operational facilities and the rehabilitation and management of the site in general including the Kerosene Ash Repository (KVAR) and the Sawyers Swamp Creek Ash Dam (SSCAD).

This Operational Noise Management Plan (ONMP) has been developed to ensure operational activities are carried out responsibly and in accordance with the relevant CoAs and any other requirements.

GPM and its contractors are also undertaking construction activities that will be managed under the Site's Construction Environmental Management Plan (CEMP).

See Section 1.3 for definitions of operational activities and construction activities.

1.1 Background to the Lidsdale Ash Repository

The Lidsdale Site was originally farmland that was gradually turned into mining premises during the late 1800s into the early 20th century. The Kerosene Vale mines were originally a series of open cut operations that changed to underground mines using portals driven under the northern escarpment.

The original ash placement operations were at the KVAD. The mining void was filled with ash transported from the WPS as a slurry (i.e. wet ash placement). When the KVAD was full, it was capped with a clay capping and then ash placement operations began at the SSCAD, which saw wet ash placement take place from 1980 to 2003. The SSCAD is still used to manage site water requirements with water levels managed by irrigation for dust suppression and other onsite water uses to prevent discharge to Sawyers Swamp Creek. When required, water is transferred for treatment via a CIP, clarified and discharged through a licenced discharge point (LDP3). The SSCAD is a declared dam under the NSW [Dams Safety Act 2015 No 26](#) (DS Act) and is subject to regular surveillance and monitoring by certified engineers in accordance with the DS Act.

The need to further develop the KVAR area to maintain power-generation operations at WPS was identified in 2001. The existing wet ash storage area (i.e. the SSCAD) was approaching its design capacity and the placement of dry ash at the KVAR was identified as a viable alternative. Conversion from wet to dry ash placement aimed to minimise environmental and social impacts potentially resulting from heavy metal accumulation.

It is noted that the Site has recently been formally Declared under the *Contaminated Land Management Act* (CLM Act) by the EPA and is subject to a Voluntary Management Plan requiring detailed and extensive investigations that will guide long term works on the SSCAD and may require additional works on the Site that would be subject to further approval.

1.2 Relevant project approval

In 2002, Project Approval was granted by the then Minister of Planning to change from wet to dry ash-producing activities and to use the KVAR area for dry ash storage.

The placement of ash on the Repository was developed in two stages:

- Stage 1: Comprises about one third of the area associated with the repository site and located on the south-western section of the site, this area was designed to operate for a period of 5 years and reached its design capacity and has been capped.
- Stage 2: Comprises the remainder the repository site, covering an area from the open face of the Stage 1 area to the edge of the original storage area. This stage was designed to operate about 10 years, depending on actual ash production rates.

On 26 November 2008, Project Approval (07_0005) was granted by the then Minister of Planning for the extension of the existing KVAR area to permit the continued disposal of ash generated by the WPS under Part 3A (now repealed) of the Environmental Planning and Assessment Act 1979. The KVAR Stage 1 placement works were completed and capped in February 2009. The KVAR Stage 2 placement works commenced soon after in April 2009.

In January 2014, WPS's Unit 7 was removed from service and deregistered from the market; whilst in March 2014, Unit 8 was placed in long term storage. However, in November 2014, EnergyAustralia NSW announced that Unit 8 was to be removed from service and the WPS deregistered from the market.

WPS ceased energy production in April 2014 and is currently being decommissioned and dismantled. The bulk transport and disposal of ash to the KVAR ceased following the closure of the WPS. The Lidsdale Ash Repository is currently being managed in a care and maintenance arrangement. Environmental studies and investigations are currently underway to support GPM's safe decommissioning, demolition, rehabilitation and management of ongoing regulatory and contractual obligations associated with the Lidsdale Ash Repository area.

Modification 1 to 07_005 was approved on 9 August 2018 under section 75W of the EP&A Act. This was to allow for the importation of clean fill (virgin excavated natural material (VENM) and excavated natural material (ENM)) for use of capping of KVAR and SSCAD over two years. This modification included a revised project area that extended the originally approved project to include the area covered by SSCAD.

Modification 2 to 07_005 was approved on 13 October 2023 under section 96(1A) of the EP&A Act. This was to allow for the importation of fill over an additional 10 years (i.e. until 13 October 2033).

The most complete description of the onsite activities was provided in the original Kerosene Vale Stage 2 Ash Repository Area Environmental Assessment prepared by Parsons Brinckerhoff in April 2008. This focused on the ongoing ash management without providing any details of site rehabilitation requirements when the power station closed. However, it did include the realignment of a section of Sawyers Swamp Creek to allow the structural earthworks required to achieve an acceptable factor of safety against failure of the ash stockpiles during earthquakes. The subsequent modification applications focussed on the potential impacts of the importation of fill material, rather than on activities within the Site where the material would be utilised.

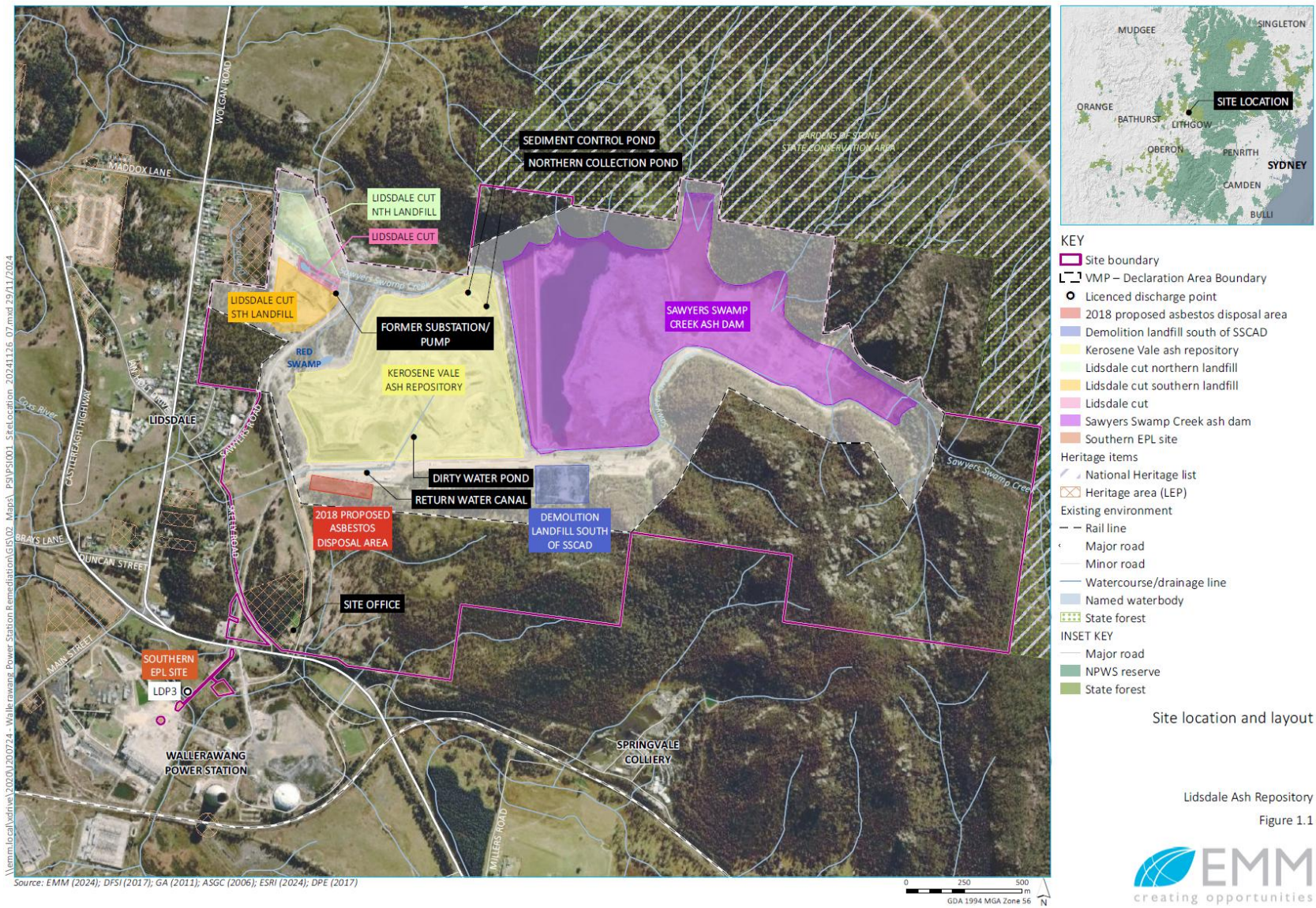


Figure 1.1 Site location and layout.

1.3 Operational Environmental Management Plan and Sub-plans

CoA 6.4 requires the applicant to develop an OEMP that outlines the environmental management practices and procedures to be followed during operations, while CoA 6.5 requires the preparation and implementation of the following plans as part of the OEMP:

- **Operational Surface Water Management Plan (OSWMP)** - identifies the management measures to minimise surface water impacts
- **Operational Noise Management Plan (ONMP)** - identifies the management measures to minimise operational noise impacts
- **Operational Groundwater Management Plan (OGMP)** - identifies the management measures to minimise operational groundwater impacts
- **Operational Air Quality Management Plan (OAQMP)** - identifies the management measures to minimise operational air quality impacts
- **Operational Landscape/Revegetation Plan (OLP)** - identifies the management measures to minimise operational biodiversity impacts
- **Operational Transport Management Plan (OTMP)** - identifies the management measures to minimise traffic and transport impacts

Given the requirement to develop these additional management plans in conjunction with the OEMP, these plans are identified as sub-plans to the OEMP.

Table 1.1 provides a high-level overview of the proposed activities that are covered by the OEMP and those covered by the CEMP. Further information on the scope of this OEMP is provided in section 1.4.

Table 1.1. Activities covered by the CEMP and OEMP

Environmental Management Plan	Activities covered
OEMP – care and maintenance operations	<ul style="list-style-type: none"> • Ash management activities • Management of on-site water systems • Capping material haulage, placement and management • Landscaping and revegetation/rehabilitation of the site • Upgrading and maintaining internal access roads in the project area

Environmental Management Plan	Activities covered
CEMP – construction activities	<ul style="list-style-type: none"> • Sawyers Swamp Creek realignment • Construction of stability berms around the perimeter of the KVAR • Excavation of the former pine plantation area • Sediment controls and surface water dams associated with construction of the KVAR stability berm and realignment of the Sawyers Swamp Creek • Establishment of freshwater collection ponds on the northern edge of SSCAD • Rearrangement of water flows around the KVAR • Establishment of access roads onto the surface of the SSCAD and associated roads across the dam surface • Reinstatement of environmental controls for historic landfill areas including capping of slumped areas, reprofiling for water management and control of sediment runoff during these activities

Noise generated during operations will primarily result from the following activities:

- Truck movements associated with materials importation and placement, along internal haul roads, occurring between 7:00 am and 10:00 pm under normal operating conditions.
- Materials placement using compactors and bulldozers to improve landform and stabilisation of the site.
- Sequential placement progressing east over the former pine plantation area, then north toward Sawyers Swamp Creek.

1.4 Environmental management system overview

GPM's Environmental Management System (EMS) is based on AS/NZS ISO 14001. The ISO 14001 standard provides best practice specifications for the implementation of an EMS. An EMS provides a framework for managing the company's environmental responsibilities so that they are integrated into overall operations. The standard approach integrates environmental management and supports the company's compliance with legislated and voluntary environmental requirements, as well as continuously improving their overall environmental performance.

The relevant environmental standard ensures a consistent approach is undertaken to integrate environmental management at all levels of the organisation by:

- identifying and maintaining awareness of relevant environmental legislation
- assignment of roles and responsibilities
- establishment of procedures for internal and external communications
- establishment of procedures for monitoring and measuring environmental performance
- setting and reviewing objectives and targets for improving environmental performance
- monitoring and measuring environmental compliance and community inquiries
- setting and reviewing management system programs for achieving objectives and targets
- provision of environmental training aligned to skill requirements
- review of EMS performance for continual improvement.

This ONMP has been developed to be consistent with the relevant provisions of GPM's EMS, including approvals and license as noted above.

A summary of the EMS and its interaction with the CEMP and OEMP is provided in Figure 1.2.

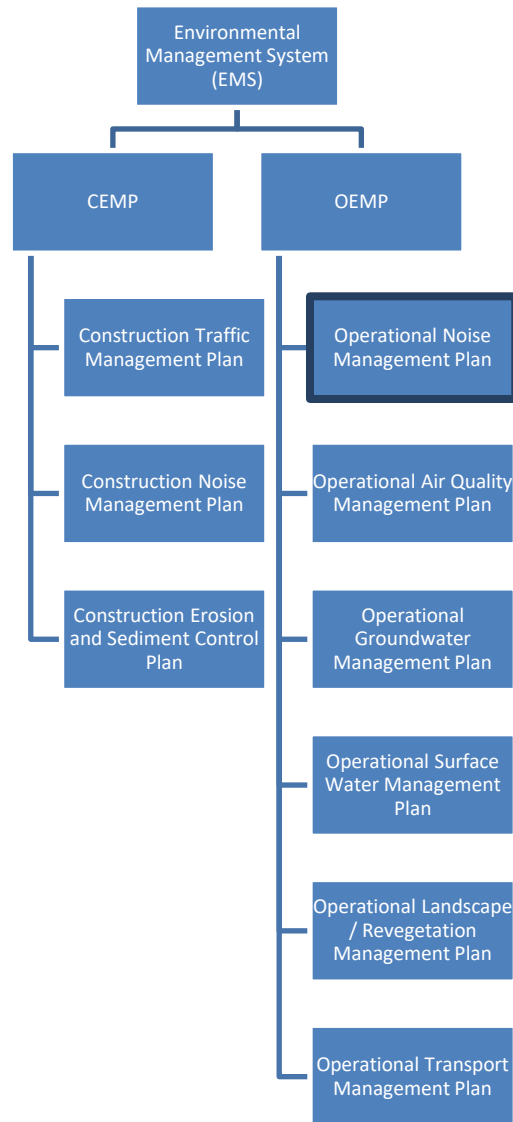


Figure 1.2 Environmental Management System flowchart

1.5 Interactions with other management plans and strategies

This ONMP (outlined in Figure 1.2 above) is a sub-plan to the OEMP and interrelates with the other (sub) management plans set out in Sections 1.3 and 1.4 above.

1.6 This CEMP Reference documents

This ONMP incorporates the obligations and criteria outlined in the following documents:

- Project Approval 07_0005 (NSW Department of Planning)
- Submission Report – Statement of Commitments (Parsons Brinckerhoff 2008)
- Modification application 07_0005 Mod 1

- Modification application 07_0005 Mod 2
- Wallerawang Power Station to Submissions Report (EA 2018)
- Environment Protection Licence 21185 (NSW Environment Protection Authority)
- Works Approval (Water Mgt Act 2000)

1.7 Management Plan Consultation and Approval Process

The OEMP and associated sub-plans, strategies and monitoring programs undergo review by the GPM team. Following this review and revision process, internal approval is provided to release the document for consultation.

Table 1.2 summarises the relevant authorities, councils, and agencies consulted during the preparation of the OEMP sub-plans and monitoring programs, in line with the conditions of approval. External consultation has been undertaken for the ONMP and Monitoring Program.

Management plans are then endorsed by the ER (CoA 6.5) and subsequently submitted to the Secretary for approval.

A copy of the latest ER Endorsement of the OEMP is included in Appendix B of this Plan.

Table 1.2 Consultation requirements for OEMP and sub-plans

Report	Relevant CoA	Condition of Approval	Consultation required
Operational Environmental Management Plan	6.4	The plan will be submitted for the approval of the Secretary no later than four weeks prior to the commencement of operation of the project, unless otherwise agreed by the Secretary.	Secretary (DPHI)
Operational Noise Management plan	6.5a	The plan has been prepared in consultation with, and to the satisfaction of, the EPA.	EPA
Groundwater Management Plan	6.5b	The plan will be prepared in consultation with, and to the satisfaction of, WaterNSW.	WaterNSW
Surface Water Management Plan	6.5c	The plan will be based on best environmental practice and will be prepared in consultation with, and to the satisfaction of, WaterNSW and Fisheries NSW.	WaterNSW Fisheries NSW
Air Quality Management Plan	6.5d	The plan has been prepared in consultation with, and to the satisfaction of, the EPA.	EPA
Operational Transport Management Plan	6.5f	The plan must be prepared in consultation with TfNSW and Council.	TfNSW Lithgow Council

Table 1.3 Consultation outcomes for ONMP

Agency	Date provided	Comments	Where addressed
EPA	21/01/2025	EPA has reviewed this plan and has no comments at this stage	Not applicable

2 Purpose and Objectives

2.1 Purpose

This ONMP for the Lidsdale Ash Repository outlines strategies and actions to mitigate environmental impacts when undertaking operational activities. As listed in Table 1.1 these activities include: ash management, maintenance of internal roads, on-site water systems management, materials placement & haulage, stabilisation and rehabilitation of the site.

Designed to set clear protocols and responsibilities, the ONMP reduces operational noise impact risks and fosters environmentally sound & sustainable practices. This sub-plan is to be read in conjunction with the OEMP.

2.2 Objectives

The objectives of the ONMP are to:

- reduce the risk of generating non-compliant noise and vibration emissions.
- document operation activities that may lead to environmental noise impacts and associated control measures to be implemented
- detail the location of sensitive noise receivers
- describe noise management criteria and associated noise monitoring protocols and reporting.

It is noted that ash is no longer placed in the repository, and as such operational activities now have a lower potential for noise impacts. This includes undertaking works outside of standard working hours.

2.3 Targets and Indicators

The following targets and indicators apply to the operational activities undertaken at the site:

Targets

- Achieve compliance with the operational noise criterion of LAeq 40 dB(A) at the nearest most affected receiver during normal operating conditions.
- Implement and maintain ongoing measures to minimise and mitigate noise impacts associated with operations at the Lidsdale Ash Repository.

Indicators

- No substantiated noise-related complaints received.
- Noise monitoring results demonstrate compliance at identified sensitive receiver locations.
- Documented reduction in noise levels associated with truck movements, supported by the implementation of noise control measures such as speed limits and reduced use of compression braking

2.4 Permissible Working Hours

In accordance with CoA 2.8 operational activities as listed in Table 1.1. Activities covered by the CEMP and OEMP are to be undertaken from 7.00 am to 10.00 pm Monday to Sunday.

Where appropriate sources of material for closure of the site can be identified and approved for use under the project approvals, these resources would be used in preference to imported materials. Wherever possible material transport and operations which are likely to be audible at residential receivers will avoid evening periods.

Condition 2.9 requires the Applicant, within six months of project operation, to review ash haulage and placement logistics to assess the feasibility of reducing operating hours. If feasible, the Applicant is to implement reduced hours where possible. However, with the closure of the Wallerawang Power Station (WPS) and cessation of ash delivery and placement, this condition is no longer applicable.

Out of standard hours emergency works are permitted as follows:

- where it is required to avoid the loss of lives, property and/or to prevent environmental harm; or
- breakdown of plant and/or equipment at the repository or the WPS with the effect of limiting or preventing ash storage at the power station outside the operating hours defined in condition 2.8; or
- a breakdown of an ash haulage truck(s) preventing haulage during the operating hours stipulated in condition 2.8 combined with insufficient storage capacity at the WPS to store ash outside of the project operating hours; or
- in the event that the National Electricity Market Management Company (NEMMCO), or a person authorised by NEMMCO, directs GPM (as a licensee) under the National Electricity Rules to maintain, increase or be available to increase power generation for system security and there is insufficient ash storage capacity at the WPS to allow for the ash to be stored.

If a breakdown of plant or equipment or a breakdown of an ash haulage truck is identified, GPM is to take all reasonable and feasible measures to repair the breakdown in the shortest time possible.

In accordance with CoA 2.11 in the event that an emergency situation as referred to under a breakdown of plant or equipment or a breakdown of an ash haulage truck GPM must prepare and submit to the Secretary a report including, but not limited to:

- the dates and a description of the emergency situations;
- an assessment of all reasonable and feasible mitigation measures to avoid recurrence of the emergency situations;
- identification of a preferred mitigation measure(s); and
- timing and responsibility for implementation of the mitigation measure(s).

The report is to be submitted to the Secretary within 60 days of the second exceedance occurring. GPM will implement all reasonable and feasible mitigation measures in accordance with the requirements of the Secretary.

2.5 Notification for out of hours work

If emergency works are undertaken, GPM shall:

- Notify the EPA prior to undertaking any ash haulage or placement outside the hours specified in CoA 2.8 and maintain a log of such activities.
- Notify the Planning Secretary in writing within seven days of any such operations.
- Inform nearby sensitive receivers before 8:00 pm if emergency operations outside approved hours are anticipated.

3 Environmental requirements

3.1 Relevant Conditions of Approval

The relevant CoAs, and where they are addressed in this ONMP are provided in Table 3.1.

Table 3.1 Relevant Conditions of Approval and where they are addressed in this report

Relevant CoA	Condition of Approval	Where addressed in this plan
2.8	Operational activities associated with the project shall only be undertaken from 7.00 am to 10.00 pm Monday to Sunday	Section 2.4 Permissible Working Hoursof this ONMP
2.9	Within six months of commencement of operation of the project the Applicant shall prepare and submit to the Secretary a review of the logistical arrangements for ash haulage and placement to determine the feasibility of reducing the hours of operation. If, as a result of the review, it is determined that ash haulage and placement times can commence later and/or finish earlier, the Applicant shall aim to observe the reduced hours whenever possible.	Section 2.4 Permissible Working Hoursof this ONMP
2.10	<p>Operations outside the hours stipulated in condition 2.8 of this approval are only permitted in the following emergency situations:</p> <p>a) where it is required to avoid the loss of lives, property and/or to prevent environmental harm; or</p> <p>b) breakdown of plant and/or equipment at the repository or the Wallerawang Power Station with the effect of limiting or preventing ash storage at the power station outside the operating hours defined in condition 2.8; or</p> <p>c) a breakdown of an ash haulage truck(s) preventing haulage during the operating hours stipulated in condition 2.8 combined with insufficient storage capacity at the Wallerawang Power Station to store ash outside of the project operating hours; or</p> <p>d) in the event that the National Electricity Market Management Company (NEMMCO), or a person authorised by NEMMCO, directs the Applicant (as a licensee) under the National Electricity Rules to maintain, increase or be available to increase power generation for system security and there is insufficient ash storage capacity at the Wallerawang Power Station to allow for the ash to be stored.</p> <p>In the event of conditions 2.10b) or 2.10c) arising, the Applicant is to take all reasonable and feasible measures to repair the breakdown in the shortest time possible</p>	Section 2.4 Permissible Working Hours of this ONMP
2.11	<p>In the event that an emergency situation as referred to under condition 2.10b) or 2.10c) occurs more than once in any two month period, the Applicant shall prepare and submit to the Secretary for approval a report including, but not limited to:</p> <p>a) the dates and a description of the emergency situations;</p> <p>b) an assessment of all reasonable and feasible mitigation measures to avoid recurrence of the emergency situations;</p> <p>c) identification of a preferred mitigation measure(s); and</p> <p>d) timing and responsibility for implementation of the mitigation measure(s).</p> <p>The report is to be submitted to the Secretary within 60 days of the second exceedance occurring. The Applicant shall implement all reasonable and feasible mitigation measures in accordance with the requirements of the Secretary.</p>	Section 2.4 Permissible Working Hoursof this ONMP

Relevant CoA	Condition of Approval	Where addressed in this plan
2.12	The Applicant shall notify the EPA prior to undertaking any emergency ash haulage or placement operations outside of the hours of operation stipulated in condition 2.8 of this approval and keep a log of such operations.	Section 2.5 of this ONMP
2.13	The Applicant shall notify the Secretary in writing within seven days of undertaking any emergency ash haulage or placement operations outside of the hours of operation stipulated in condition 2.8 of this approval.	Section 2.5 of this ONMP
2.14	The Applicant shall notify nearby sensitive receivers (as defined in the Operational Noise Management Plan required under condition 6.5a) of this approval) prior to 8.00 pm where it is known that emergency ash haulage or placement operations will be required outside of the hours of operation stipulated in condition 2.8 of this approval.	Section 2.5 of this ONMP
2.15	The cumulative operational noise from the ash placement area and ash haulage activity shall not exceed an $L_{Aeq, 15 \text{ minute}}$ of 40 dB(A) at the nearest most affected sensitive receiver during normal operating hours as defined in condition 2.8 of this approval.	Section 4.1 Operational Noise Criteria of this ONMP
2.15 a,b	<p>This noise criterion applies under the following meteorological conditions:</p> <ul style="list-style-type: none"> a) wind speeds up to 3 m/s at 10 metres above ground; and/or b) temperature inversion conditions of up to 3oC/100 m and source to receiver gradient winds of up to 2 m/s at 10 m above ground level. <p>This criterion does not apply where the Applicant and the affected landowner have reached a negotiated agreement in regard to noise, and a copy of the agreement has been forwarded to the Secretary and the EPA.</p>	Section 4.1 Operational Noise Criteria Table 4.1 – Environmental Mitigation Measures
2.16	The Applicant shall implement measures to ensure noise attenuation of trucks. These measures may include, but are not necessarily limited to, installation of residential class mufflers, engine shrouds, body dampening, speed limiting, fitting of rubber stoppers to tail gates, limiting the use of compression braking, and ensuring trucks operate in a one-way system at the ash repository where feasible.	Table 4.1 – Environmental Mitigation Measures
2.17	The Applicant shall liaise with the owner/operator of Angus Place Coal Mine with the aim of preparing a protocol which provides for a co-operative approach for the management and mitigation of noise impacts associated with coal and ash truck movements along the private haul road.	<p>Angus Place and WPS are no longer operating.</p> <p>If Angus Place recommences operation, an action will be taken to review the management plan and update if required.</p>

Relevant CoA	Condition of Approval	Where addressed in this plan
2.18	Where noise monitoring (as required by conditions 3.2 or 3.3 of this approval) identifies any non-compliance with the operational noise criterion specified under condition 2.15 of this approval the Applicant shall prepare and submit to the Secretary for approval a report including, but not limited to:	Section 5.2 Table 4.1 – Environmental Mitigation Measures
2.18a	An assessment of all reasonable and feasible physical and other mitigation measures for reducing noise at the source including, but not limited to - i) construction of a noise barrier along the haulage road, ii) alternative ash haulage routes, and iii) alternative methods of ash conveyance to the repository; and	Table 4.1 – Environmental Mitigation Measures Note: The haul road is not in use as originally anticipated by this condition.
2.18b	Identification of the preferred measure(s) for reducing noise at the source;	Table 4.1 – Environmental Mitigation Measures
2.18c	Feedback from directly affected property owners and the EPA on the proposed noise mitigation measures; and	Table 4.1– Environmental Mitigation Measures
2.18d	Location, type, timing and responsibility for implementation of the noise mitigation measure(s).	Table 4.1 – Environmental Mitigation Measures
2.18	The report is to be submitted to the Secretary within 60 days of undertaking the noise monitoring which has identified exceedances of the operational noise criterion specified under condition 2.15, unless otherwise agreed to by the Secretary. The Applicant shall implement all reasonable and feasible mitigation measures in accordance with the requirements of the Secretary.	Table 4.1 – Environmental Mitigation Measures

Relevant CoA	Condition of Approval	Where addressed in this plan
2.19	<p>If, after the implementation of all reasonable and feasible source controls, as identified in the report required by condition 2.18, the noise generated by the project exceeds the criterion stipulated in condition 2.15 at:</p> <ul style="list-style-type: none"> a) any sensitive receiver in existence at the date of this approval; or b) any residential dwelling for which an approval has been sought or obtained under the <i>Environmental Planning and Assessment Act 1979</i> no later than six months after the confirmation of operational noise levels; <p>Upon receiving a written request from an affected landowner (unless that landowner has acquisition rights under condition 2.20 of this approval and has requested acquisition) the Applicant shall implement additional noise mitigation measures such as double glazing, insulation, air conditioning and or other building acoustic treatments at any residence on the land, in consultation with the landowner.</p>	Table 4.1 – Environmental Mitigation Measures
2.19 (cont.)	<p>For the purpose of this condition and condition 2.20, confirmation of operational noise levels means:</p> <ul style="list-style-type: none"> a) completion of the operational noise review required under condition 3.2 of this approval; and b) implementation of any source controls, as required under condition 2.18 of this approval, should the operational noise review indicate noise levels in excess of the operational noise criterion specified in condition 2.15; and c) monitoring of operational noise levels, as required under condition 3.3b) of this approval, following the implementation of any source controls. <p>The additional mitigation measures must be reasonable and feasible. If within three months of receiving this request from the landowner the Applicant and landowner cannot agree on the measures to be implemented, or there is a dispute about the implementation of these measures, then either party may refer the matter to the Director-General for resolution, whose decision shall be final.</p>	Table 4.1 – Environmental Mitigation Measures
2.20	<p>If, after the implementation of all reasonable and feasible source controls, as identified in the report required by condition 2.18, the noise generated by the project exceeds the criterion stipulated in condition 2.15 by more than 5 dB(A):</p> <ul style="list-style-type: none"> a) at a sensitive receiver in existence at the date of this approval; or b) at any residential dwelling for which an approval has been sought or obtained under the <i>Environmental Planning and Assessment Act 1979</i> prior to the landholder receiving written notification that they are entitled to land acquisition rights, as per condition 2.25 of this approval; or c) over 25% or more of the area of a vacant allotment in existence at the date of this approval, and where a dwelling is permissible under the <i>Environmental Planning and Assessment Act 1979</i> at that date, with the exception of land that is currently used for industrial or mining purposes; <p>The Applicant shall, upon receiving a written request for acquisition from the landowner, acquire the land in accordance with the procedures in conditions 2.22 to 2.24 of this approval.</p> <p>Any landowner that has agreed to, or property that has been the subject of, the application of additional noise mitigation measures under condition 2.19 of this approval waives the right to land acquisition.</p>	Table 4.1 – Environmental Mitigation Measures

Relevant CoA	Condition of Approval	Where addressed in this plan
2.21	The land acquisition rights under condition 2.20 of this approval do not apply to landowners who have sought approval to subdivide their land after the date of this approval, unless the subdivision is created pursuant to condition 2.24 of this approval.	Table 4.1 – Environmental Mitigation Measures
2.22	<p>Within three months of receiving a written request from a landowner with acquisition rights under condition 2.20 of this approval, the Applicant shall make a binding written offer to the landowner based on:</p> <p>a) the current market value of the landowner’s interest in the property at the date of this written request, as if the property was unaffected by the project which is the subject of the project application, having regard to the:</p> <ul style="list-style-type: none"> i) existing and permissible use of the land, in accordance with the applicable planning instruments at the date of the written request ii) presence of improvements on the property and/or any approved building or structure which has been physically commenced at the date of the landowner’s written request, and is due to be completed subsequent to that date, but excluding any improvements that have resulted from the implementation of condition 2.19 of this approval. <p>b) the reasonable costs associated with:</p> <ul style="list-style-type: none"> i) relocating within the Lithgow local government area, or to any other local government area determined by the Secretary ii) obtaining legal advice and expert advice for determining the acquisition price of the land, and the terms upon which it is required <p>c) reasonable compensation for any disturbance caused by the land acquisition process.</p> <p>However, if at the end of this period, the Applicant and landowner cannot agree on the acquisition price of the land, and/or the terms upon which the land is to be acquired, then either party may refer the matter to the Secretary for resolution.</p> <p>Upon receiving such a request, the Secretary shall request the President of the NSW Division of the Australian Property Institute to appoint a qualified independent valuer or Fellow of the Institute, to consider submissions from both parties, and determine a fair and reasonable acquisition price for the land, and/or terms upon which the land is to be acquired.</p> <p>Within 14 days of receiving the independent valuer’s determination, the Applicant shall make a written offer to purchase the land at a price not less than the independent valuer’s determination.</p> <p>If the landowner refuses to accept this offer within six months of the date of the Applicant’s offer, the Applicant’s obligations to acquire the land shall cease, unless otherwise agreed by the Secretary.</p>	Table 4.1 – Environmental Mitigation Measures
2.23	The Applicant shall bear the costs of any valuation or survey assessment requested by the independent valuer or the Secretary and the costs of determination referred to above.	Table 4.1 – Environmental Mitigation Measures
2.24	If the Applicant and landowner agree that only part of the land shall be acquired, then the Applicant shall pay all reasonable costs associated with obtaining Council approval for any plan of subdivision (where permissible), and registration of the plan at the Office of the Registrar-General.	Table 4.1 – Environmental Mitigation Measures

Relevant CoA	Condition of Approval	Where addressed in this plan
2.25	The Applicant shall provide written notice to all landowners that are entitled to rights under conditions 2.19 and 2.20 within 21 days of determining the landholdings where additional noise mitigation measures or land acquisition apply. For the purpose of condition 2.20b), this condition only applies where operational noise levels have been confirmed in accordance with the definition in condition 2.19.	Table 4.1 – Environmental Mitigation Measures
3.2	<p>Within 60 days of the commencement of operation of the project, unless otherwise agreed to by the Director-General, the Applicant shall submit for the approval of the Secretary an Operational Noise Review to confirm the operational noise impacts of the project. The Operational Noise Review must be prepared in consultation with, and to the satisfaction of, the EPA. The Review shall:</p> <ul style="list-style-type: none"> a) identify the appropriate operational noise objectives and level for sensitive receivers b) describe the methodologies for noise monitoring including the frequency of measurements and location of monitoring sites c) document the operational noise levels at sensitive receivers as ascertained by the noise monitoring program d) assess the noise performance of the project against the noise criterion specified in condition 2.15 of this approval and the predicted noise levels as detailed in the report referred to under condition 1.1 of this approval e) provide details of any entries in the Complaints Register (as required under condition 5.4 of this approval) relating to noise impacts. <p>Where monitoring indicates noise levels in excess of the operational noise criterion specified in condition 2.15 of this approval, the Applicant shall prepare a report as required by condition 2.18 of this approval.</p>	<p>Table 4.1 – Environmental Mitigation Measures</p> <p>Review has been completed</p>

Relevant CoA	Condition of Approval	Where addressed in this plan
3.3	<p>The Applicant shall prepare and implement an Operational Noise Monitoring Program to assess compliance against the operational noise criterion stipulated in condition 2.15 of this approval, throughout the life of the project. The noise monitoring program shall be prepared in consultation with, and to the satisfaction of, the EPA.</p> <p>The noise monitoring program shall be prepared in accordance with the requirements of the <i>NSW Noise Policy for Industry</i> (EPA, 2017) (or its latest version) and must include, but not be limited to:</p> <ul style="list-style-type: none"> a) monitoring during ash placement in the far western area of the site adjacent to the haul road; and b) monitoring of the effectiveness of any noise mitigation measures implemented under condition 2.18 of this approval, against the noise criterion specified in condition 2.15 of this approval. <p>Noise from the project is to be measured at the most affected point on or within the residential boundary, or at the most affected point within 30 metres of a dwelling where the dwelling is more than 30 metres from the boundary, to determine compliance with the noise criterion stipulated in condition 2.15 of this approval. Where it can be demonstrated that direct measurement of noise from the project is impractical, the EPA may accept alternative means of determining compliance and the modifying factors shall also be applied to the measured noise levels where applicable in accordance with the <i>NSW Noise Policy for Industry</i> (EPA, 2017) (or its latest version).</p> <p>The Applicant shall forward to the EPA and the Secretary a report containing the results of any non-compliance within 14 days of conducting a noise assessment.</p> <p>Where monitoring indicates noise levels in excess of the operational noise criterion specified in condition 2.15 of this approval, approval, the Applicant shall prepare a report as required by condition 2.18 of this approval.</p> <p>The monitoring program shall form part of the Operational Noise Management Plan referred to in condition 6.5a) of this approval.</p>	Appendix A, Operational Noise Monitoring Program
6.5	As part of the Operation Environmental Management Plan for the project, required under condition 6.4 of this approval, the Applicant shall prepare and implement the following Management Plans:	
6.5a	An Operational Noise Management Plan to detail measures to mitigate and manage noise during operation of the project. The Plan shall be prepared in consultation with, and to the satisfaction of, the EPA and include, but not necessarily be limited to:	This ONMP
6.5a i	Procedures to ensure that all reasonable and feasible noise mitigation measures are applied during operation of the project;	Table 4.1 – Environmental Mitigation Measures
6.5a ii	Identification of all relevant sensitive receivers and the applicable criteria at those receivers commensurate with the noise limit specified under condition 2.15 of this approval;	Appendix A, Operational Noise Monitoring Program

Relevant CoA	Condition of Approval	Where addressed in this plan
6.5a iii	identification of activities that will be carried out in relation to the project and the associated noise sources;	Appendix A, Operational Noise Monitoring Program
6.5a iv	noise monitoring procedures (as referred to in condition 3.3 of this approval) for periodic assessment of noise impacts at the relevant receivers against the noise limits specified under this approval and the predicted noise levels as detailed in the report referred to under condition 1.1 of this approval;	Appendix A, Operational Noise Monitoring Program
6.5a v	details of all management methods and procedures that will be implemented to control individual and overall noise emissions from the site during operation;	Appendix A, Operational Noise Monitoring Program
6.5a vi	procedures and corrective actions to be undertaken if non-compliance against the operational noise criteria is detected; and	Section 5.3
6.5a vii	provisions for periodic reporting of results to EPA.	Section 5.3
7.1	The Secretary must be notified in writing via the Major Projects website immediately after the Applicant becomes aware of an incident. The notification must identify the development (including the application number and the name of the development if it has one) and set out the location and nature of the incident. Subsequent notification requirements must	Table 4.1 – Environmental Mitigation Measures Section 5 Further Management Obligations
7.2	The Secretary must be notified in writing via the Major Projects website within seven days after the Applicant becomes aware of any non-compliance. A non-compliance notification must identify the development and the application number for it, set out the condition of approval that the development is non-compliant with, the way in which it does not comply and the reasons for the non-compliance (if known) and what actions have been, or will be, undertaken to address the non-compliance. <i>Note: A non-compliance which has been notified as an incident does not need to also be notified as a non-compliance.</i>	Table 4.1 – Environmental Mitigation Measures Section 5 Further Management Obligations
C.1	A written incident notification addressing the requirements set out below must be submitted to the Secretary via the Major Projects website within seven days after the Applicant becomes aware of an incident. Notification is required to be given under this condition even if the Applicant fails to give the notification required under condition 7.1 or, having given such notification, subsequently forms the view that an incident has not occurred.	Table 4.1 – Environmental Mitigation Measures Section 5 Further Management Obligations

Relevant CoA	Condition of Approval	Where addressed in this plan
C.2	<p>Written notification of an incident must:</p> <ul style="list-style-type: none"> a) identify the project and application number b) provide details of the incident (date, time, location, a brief description of what occurred and why it is classified as an incident) c) identify how the incident was detected d) identify when the Applicant became aware of the incident e) identify any actual or potential non-compliance with conditions of approval f) describe what immediate steps were taken in relation to the incident g) identify further action(s) that will be taken in relation to the incident h) identify a project contact for further communication regarding the incident. 	<p>Table 4.1 – Environmental Mitigation Measures</p> <p>Section 5 Further Management Obligations</p>
C.3	<p>Within 30 days of the date on which the incident occurred or as otherwise agreed to by the Secretary, the Applicant must provide the Secretary and any relevant public authorities (as determined by the Secretary) with a detailed report on the incident addressing all requirements below, and such further reports as may be requested.</p>	<p>Table 4.1 – Environmental Mitigation Measures</p> <p>Section 5 Further Management Obligations</p>
C.4	<p>The Incident Report must include:</p> <ul style="list-style-type: none"> a) a summary of the incident b) outcomes of an incident investigation, including identification of the cause of the incident c) details of the corrective and preventative actions that have been, or will be, implemented to address the incident and prevent recurrence d) details of any communication with other stakeholders regarding the incident. 	<p>Table 4.1 – Environmental Mitigation Measures</p> <p>Section 5 Further Management Obligations</p>

3.2 Compliance tracking

CoA 4.2 mandates a compliance tracking program to track compliance with the requirements before commencing operations. A compliance tracking tool has been prepared for internal use by GPM to ensure effective and efficient tracking of compliance. Further details are outlined in Section 3.7 of the OEMP.

4 Environmental management

4.1 Operational Noise Criteria

The cumulative operational noise from the ash placement area and ash haulage activity will not exceed an LAeq (15 minute) of 40 dB(A) at the nearest most affected sensitive receiver during normal operating hours.

This noise criterion applies under the following meteorological conditions:

- wind speeds up to 3 m/s at 10 metres above ground; and/or
- temperature inversion conditions of up to 3°C/100 m and source to receiver gradient winds of up to 2 m/s at 10 m above ground level.

This criterion does not apply where the GPM and the affected landowner have reached a negotiated agreement in regard to noise, and a copy of the agreement has been forwarded to the Secretary and the EPA.

Additionally, in accordance with Environmental Protection Licence 21185, noise from the Kerosene Vale Ash Repository premise must not exceed 40 dB(A) LAeq (15-minute) at the nearest sensitive receiver.

Compliance is to be determined at the most affected location within the residential boundary, or within 30 m of a dwelling in rural settings, with adjustments applied for tonal, impulsive, or intermittent noise in accordance with the NSW Industrial Noise Policy.

Noise limits associated with the EPL apply under specified meteorological conditions, including moderate wind and temperature inversion scenarios, and do not apply where a negotiated noise agreement exists between the licensee and affected residents, provided the EPA is notified.

4.2 Management measures

Management actions to minimise operational impacts are summarised in Table 4.1.

Table 4.1 Environmental Management Measures

Relevant aspect	Management and mitigation measures	Source of requirement	Frequency	Relevant records	Responsibility
Noise Management Criteria	<p>Activities shall be managed to avoid noise emission levels above L_{Aeq} of 40dB(A) at the nearest, most affected receiver.</p> <p>This criterion applies under the following meteorological conditions:</p> <ul style="list-style-type: none"> a) wind speeds up to 3 m/s at 10 metres above ground; and/or b) temperature inversion conditions of up to 3°C/100 m and source to receiver gradient winds of up to 2 m/s at 10 m above ground level. <p>Note: This criterion does not apply where the Applicant and the affected landowner have reached a negotiated agreement in regard to noise, and a copy of the agreement has been forwarded to the Secretary and the EPA.</p>	CoA 2.15	Operations	<p>Monitoring records</p> <p>Complaints register</p> <p>Site inspection checklist</p>	GPM
General Mitigation	The distance between noisy plant, equipment and sensitive receptors will be maximised where practicable.	CoA 2.15	Daily	Site inspection checklist	Contractor
Activities Scheduling	All noise intensive works will be scheduled between late morning to early evening periods to minimise impact on sensitive receivers, including peak periods (where transportation noise dominates), when possible or practicable.	CoA 2.15	Daily	Site inspection checklist	Contractor
Activities Scheduling	No onsite activities or engines will be started before the prescribed start time of 7:00 am.	CoA 2.8 and 2.16	Daily	Site inspection checklist	Contractor
Plant & Equipment	All equipment and plant used on the Lidsdale Ash Repositories will meet the typical noise levels presented in AS 2436.	CoA 2.15	Daily	Site inspection checklist	Contractor
Plant & Equipment	All equipment will be adequately maintained and kept in good operating order.	CoA 2.15	Daily	<p>Site inspection checklist</p> <p>Equipment maintenance and compliance register</p>	Contractor

Relevant aspect	Management and mitigation measures	Source of requirement	Frequency	Relevant records	Responsibility
Plant & Equipment	All equipment will be operated in an appropriate and efficient manner.	CoA 2.15	Daily	Site inspection checklist	Contractor
Plant & Equipment	Any unusually noisy equipment will be investigated and rectified as soon as practicable.	CoA 2.15	Daily	Site inspection checklist	Contractor
Training and Awareness	Noise issues will be discussed as part of routine 'toolbox' talks to keep staff aware of current care and maintenance activities and potential noise issues.	CoA 2.15	Daily or as required	Toolbox talk meeting minutes	Contractor
Training and Awareness	Inductions will include relevant information relating to noise management obligations applicable at the site. For example, this will include the location of noise sensitive receptors, any site or activities specific mitigation measures, noise complaints procedure, as well as the consequences of not complying with these mitigation measures.	Best practice	Operations	Training records	Contractor
Transport noise mitigation	GPM and its transport contractors will proactively implement noise attenuation measures for operational trucks to minimise potential noise impacts. These measures include, but may not be limited to <ul style="list-style-type: none"> • fitting residential-grade mufflers, • installing engine shrouds and body dampening, • applying speed limits, • fitting rubber stoppers to tailgates, • minimising the use of compression braking, and • maintaining a one-way traffic system within the ash repository where practicable. 	CoA 2.16	Operations	Equipment maintenance registers Equipment &/or site inspection checklists Audit/Compliance registers	Contractor
Transport noise mitigation	The use of alternative warning devices on plant machinery will be used (subject to OHS requirements)	CoA 2.16	During normal conditions	Site inspection checklist	Contractor

Relevant aspect	Management and mitigation measures	Source of requirement	Frequency	Relevant records	Responsibility
Transport noise mitigation	Pre-commencement plant and equipment inspections shall be undertaken to confirm noise attenuation has been fitted or if another form of noise attenuation is necessary – such as speed limiting or limiting compression braking.	CoA 2.16	Prior to commencement of operations	Site inspection checklist	Contractor
Transport noise mitigation	Noise reduction techniques applied to trucks will be routinely inspected and maintained to ensure required operational efficiency.	OEMP	As required by manufacturers or following complaints.	Site inspection checklist	Contractor
Transport noise mitigation	Deliveries of supplies to the Lidsdale Ash Repository not to exceed 6 trucks in a 15-minute period.	CoA 2.15	Daily	Toolbox talk minutes	GPM / Contractor
Transport noise mitigation	Deliveries of supplies should not occur outside of the hours of operation of Lidsdale Ash Repository (7:00 am to 10:00 pm Monday to Sunday)	CoA 2.8	Daily	Toolbox talk minutes	GPM / Contractor
Angus Place Coal Mine	GPM will maintain a cooperative approach to managing potential noise impacts associated with haul road use. Should operations at Angus Place Coal Mine recommence, this management plan will be reviewed and updated as necessary to include a joint noise management protocol with the mine operator.	CoA 2.17	As necessary	Consultation records	GPM
Monitoring and Assessment	A review of the noise performance of the Lidsdale Ash Repositories operations will be undertaken to assess compliance with the prescribed noise criterion of 40dB(A) $L_{Aeq, 15 \text{ min}}$ at the nearest noise sensitive receivers. Note: Refer to the Operational Noise Monitoring Program, Appendix A for further details.	CoA 3.2	Complete	Operational Noise Review report	GPM
Monitoring and Assessment	The criterion to limit cumulative operational noise levels to below 40 dB(A) $L_{Aeq, 15 \text{ min}}$ does not apply where GPM and the potentially affected landowner have reached a negotiated agreement in regard to noise and a copy of this agreement has been forwarded to the Secretary and the EPA.	CoA 2.15	As required	Noise level agreement between GPM and landholder	GPM

Relevant aspect	Management and mitigation measures	Source of requirement	Frequency	Relevant records	Responsibility
Monitoring and Assessment	A corrective actions register will be kept on site to identify response actions to potential noise issues from any change in operations for proactive response to potential noise impacts. This register will identify whether subplans need to be updated with feasible engineering controls, noise mitigations in accordance with periodic review requirements.	OEMP	Complete	Corrective Actions Register	GPM / Contractor
Monitoring and Assessment	Attended noise monitoring will be undertaken at sensitive receivers as outlined in the Operational Noise Monitoring Program, Appendix A. Note: Refer to the Operational Noise Management Plan, Appendix A for further details.	Operational Noise Monitoring Program, CoA 2.18d	Quarterly	Report to EPA	GPM
Monitoring and Assessment	Attended noise monitoring and assessment of compliance of operations will be undertaken at sensitive receivers on a periodic basis, or as a result of a complaint or due to changes in operations. Note: Refer to the Operational Noise Monitoring Program, Appendix A for further details.	CoA 6.3b)	As required in response to complaints or change in operation	Quarterly noise monitoring reports	Specialised consultant / Contractor
Monitoring and Assessment	Attended ambient noise monitoring will take place at residential receiver locations identified in the Operational Noise Monitoring Program (incl. Skelly Road, Neubeck Street, Wolgan Road, Maddox Lane) and will provide periodic 15-minute ambient noise levels. Note: Refer to the Operational Noise Monitoring Program, Appendix A for further details.	Operational Noise Monitoring Program, Appendix A	During daytime (7am-6pm) and evening time (6pm-10am) for one day	Quarterly noise monitoring reports	GPM / Specialised consultant
Monitoring and Assessment	If noise monitoring identifies a non-compliance with the operational noise criteria, GPM will assess all reasonable and feasible source mitigation options, such as haul road noise barriers, alternative haulage routes, or ash conveyance methods and submit a mitigation report to the Secretary for approval.	CoA 2.18	As required	Quarterly noise monitoring reports	GPM / Specialised consultant

Relevant aspect	Management and mitigation measures	Source of requirement	Frequency	Relevant records	Responsibility
Monitoring and Assessment	<p>Where noise monitoring identifies any non-compliance with the operational noise criterion, a report will be submitted to the Secretary within 60 days of undertaking the noise monitoring which has identified exceedances of the operational noise criterion. The report will include:</p> <ul style="list-style-type: none"> a) the preferred measure(s) for reducing noise at the source will be identified b) results of consultation with directly affected property owners and the EPA on the proposed noise mitigation measures c) location, type, timing and responsibility for implementation of the noise mitigation measure(s). <p>GPM will implement all reasonable and feasible mitigation measures in accordance with the requirements of the Secretary.</p>	CoA 2.18b-d	As required	If required	GPM / Specialised consultant
Monitoring and Assessment	Any identified non-compliance will be reported to the Secretary within 7 days of GPM becoming aware of the non-compliance.	CoA 7.2, C1	As required	Report to Secretary	GPM

Relevant aspect	Management and mitigation measures	Source of requirement	Frequency	Relevant records	Responsibility
At Property Mitigation	<p>GPM will implement additional noise mitigation measures at affected residences if monitoring confirms that project-related noise exceeds the operational noise criteria, despite all reasonable and feasible source controls having been applied.</p> <p>Upon confirmation of exceedance and receipt of a written request from an affected landowner (excluding cases where acquisition rights apply), GPM will work collaboratively with the landowner to design and implement additional reasonable and feasible property-specific mitigation measures. These may include double glazing, acoustic insulation, air conditioning, or other building treatments to achieve compliance.</p> <p>Implementation Trigger:</p> <ul style="list-style-type: none"> • Confirmation of operational noise levels indicating exceedance of the noise criterion. • Completion of the operational noise review and source control implementation. • Valid written request from an affected landowner within the specified timeframe. <p>Contingency / Dispute Resolution:</p> <p>If agreement on mitigation measures cannot be reached within three months, either party may refer the matter to the Planning Secretary (Director-General) for resolution.</p>	CoA 2.19	As required	Report to Secretary	GPM / Contractor
Incidents and Complaints Records	<p>A log of noise related incidents will be kept at GPM premises. The log will record all noise complaints, including location, action carried out and outcomes of investigations and measures implemented.</p>	CoA 2.19	As required	Incident register Complaints register	GPM
Incidents and Complaints Records	<p>The noise management log will be reviewed on a periodic basis to determine trends.</p>	CoA 2.18, 3.2 and 5.4	As required	Incident register	GPM

Relevant aspect	Management and mitigation measures	Source of requirement	Frequency	Relevant records	Responsibility
Incidents and Complaints Records	<p>In the event of a noise related complaint associated with the operation of Lidsdale Ash Repositories activities, an assessment of received noise influence and potential mitigation measures will be undertaken.</p> <p>Note: Refer to the Operational Noise Management Plan, Appendix A for further details.</p>	CoA 2.18, 3.2 and 5.4	As required	Incident register	GPM / Contractor
Management Plan Review	<p>Within three months of:</p> <ul style="list-style-type: none"> a) submitting an incident report (CoA 7.1) b) submitting the Annual Review (CoA 7.3) c) submitting an Independent Environmental Audit (CoA 4.2); or d) any modification to the approval conditions (unless otherwise specified), <p>GPM will proactively review and, if necessary, update all required studies, strategies, or plans to ensure they reflect best practice and continue to meet the conditions of approval to the Secretary's satisfaction. Where updates are made, the revised documents will be submitted to the Secretary within four weeks of the review, unless otherwise agreed.</p> <p>Note: This ensures that all strategies, plans, and programs remain current and incorporate measures to enhance the development's environmental performance</p>	CoA 2.18, 3.2 and 6.6	As required	Noise Management Sub-Plan version control	GPM

Relevant aspect	Management and mitigation measures	Source of requirement	Frequency	Relevant records	Responsibility
Land acquisition	<p>If, after the implementation of all reasonable and feasible source controls, as identified in this table, the noise generated by the project exceeds the criterion of $L_{Aeq, 15 \text{ min}}$ of 40 dB(A) by more than 5 dB(A):</p> <ul style="list-style-type: none"> a) at a sensitive receiver in existence at the date of the approval; or b) at any residential dwelling for which an approval has been sought or obtained under the Environmental Planning and Assessment Act 1979 prior to the landholder receiving written notification that they are entitled to land acquisition rights, as per condition 2.25 of the approval; or c) over 25% or more of the area of a vacant allotment in existence at the date of this approval, and where a dwelling is permissible under the Environmental Planning and Assessment Act 1979 at that date, with the exception of land that is currently used for industrial or mining purposes; <p>GPM will, upon receiving a written request for acquisition from the landowner, acquire the land in accordance with the procedures in conditions 2.22 to 2.24 of the approval.</p> <p>It is noted that any landowner that has agreed to, or property that has been the subject of, the application of additional noise mitigation measures under condition 2.19 of the approval waives the right to land acquisition.</p>	CoA 2.20	As required	If required	GPM
Land acquisition	<p>It is noted that land acquisition rights do not apply to landowners who have sought approval to subdivide their land after the date of the approval, unless the subdivision is created pursuant to condition 2.24 of the approval, where GPM and the landowner agree that only part of the land will be acquired.</p>	CoA 2.21	As required	If required	GPM
Land acquisition	<p>Within three months of receiving a written request from a landowner with acquisition rights under condition 2.20 of the approval, GPM will make a binding written offer to the landowner based on:</p> <ul style="list-style-type: none"> a) the current market value of the landowner's interest in the property at the date of this written request, as if the 	CoA 2.22	As required	If required	GPM

Relevant aspect	Management and mitigation measures	Source of requirement	Frequency	Relevant records	Responsibility
	<p>property was unaffected by the project which is the subject of the project application, having regard to the:</p> <ul style="list-style-type: none"> i) existing and permissible use of the land, in accordance with the applicable planning instruments at the date of the written request; and ii) presence of improvements on the property and/or any approved building or structure which has been physically commenced at the date of the landowner's written request, and is due to be completed subsequent to that date, but excluding any improvements that have resulted from the implementation of condition 2.19 of this approval; <p>b) the reasonable costs associated with:</p> <ul style="list-style-type: none"> i) relocating within the Lithgow local government area, or to any other local government area determined by the Secretary; ii) obtaining legal advice and expert advice for determining the acquisition price of the land, and the terms upon which it is required; and <p>c) reasonable compensation for any disturbance caused by the land acquisition process.</p> <p>However, if at the end of this period, the Applicant and landowner cannot agree on the acquisition price of the land, and/or the terms upon which the land is to be acquired, then either party may refer the matter to the Secretary for resolution.</p> <p>Upon receiving such a request, the Secretary will request the President of the NSW Division of the Australian Property Institute to appoint a qualified independent valuer or Fellow of the Institute, to consider submissions from both parties, and determine a fair and reasonable acquisition price for the land, and/or terms upon which the land is to be acquired.</p> <p>Within 14 days of receiving the independent valuer's determination, the Applicant will make a written offer to purchase the land at a price not less than the independent valuer's determination.</p> <p>If the landowner refuses to accept this offer within six months of the date of the Applicant's offer, the Applicant's obligations to</p>				

Relevant aspect	Management and mitigation measures	Source of requirement	Frequency	Relevant records	Responsibility
	acquire the land will cease, unless otherwise agreed by the Secretary.				
Land acquisition	GPM will bear the costs of any valuation or survey assessment requested by the independent valuer or the Secretary and the costs of determination referred to above.	CoA 2.23	As required	If required	GPM
Land acquisition	If GPM and landowner agree that only part of the land will be acquired, then the Applicant will pay all reasonable costs associated with obtaining Council approval for any plan of subdivision (where permissible), and registration of the plan at the Office of the Registrar-General.	CoA 2.24	As required	If required	GPM
Land acquisition	GPM will provide written notice to all landowners that are entitled to rights under conditions 2.19 and 2.20 within 21 days of determining the landholdings where additional noise mitigation measures or land acquisition apply. For the purpose of condition 2.20b), this condition only applies where operational noise levels have been confirmed in accordance with the definition in condition 2.19.	CoA 2.25	As required	If required	GPM

Relevant aspect	Management and mitigation measures	Source of requirement	Frequency	Relevant records	Responsibility
Reporting	<p>Non-compliances</p> <p>The Secretary will be notified in writing via the Major Projects website within seven (7) days of GPM becoming aware of any non-compliance.</p> <p>Notifications will identify the development and application number, specify the relevant approval condition, describe the nature and cause of the non-compliance (if known), and outline actions taken or proposed to address it.</p> <p>Incidents</p> <p>The Secretary will be notified immediately upon GPM becoming aware of any incident.</p> <p>Notifications will include the project and application number; date, time, and location of the incident; a brief description and rationale for its classification; how and when it was detected; any actual or potential non-compliance; immediate and planned corrective actions; and a project contact for follow-up.</p> <p>Notifications are required even if prior notifications under Condition 7.1 were not provided or if it is later determined that an incident did not occur.</p> <p>Within 30 days of the incident (or as otherwise agreed by the Secretary), a detailed Incident Report will be submitted to the Secretary and any relevant public authorities.</p> <p>The report will summarise the incident, present investigation findings including the cause, outline corrective and preventative actions, and document communications with stakeholders.</p> <p>All subsequent notifications and reports must comply with the requirements set out in Appendix 3 of the Project Approval.</p>	<p>CoA 7.1, 7.2</p> <p>Planning Approval (07_0005) Appendix 3</p>	As required	<p>Incident notification/report</p> <p>Non-compliance notification/report</p>	GPM
Reporting	<p>An Annual Return will be submitted in accordance with EPL 21185 and the EPA publication A Guide to Licensing within 60 days of each reporting period. With an anniversary date of 14 September, the Return is due by 13 November each year and it must include a Statement of Compliance and a summary of all required monitoring (including complaint records) in line with condition R1 of the licence</p>	EPL	Annual	EPL Annual Return	GPM

Relevant aspect	Management and mitigation measures	Source of requirement	Frequency	Relevant records	Responsibility
	<p>Within 30 days of the date on which the incident occurred or as otherwise agreed to by the Secretary, GPM will provide the Secretary and any relevant public authorities (as determined by the Secretary) with a detailed report on the incident addressing all requirements below, and such further reports as may be requested.</p> <p>The Incident Report must include:</p> <ul style="list-style-type: none"> a) a summary of the incident b) outcomes of an incident investigation, including identification of the cause of the incident c) details of the corrective and preventative actions that have been, or will be, implemented to address the incident and prevent recurrence d) details of any communication with other stakeholders regarding the incident. 	CoA C.1, C.2	As required	If required	GPM / Specialist Consultant
Reporting	The Annual Environmental Management Report will be submitted to the Secretary complete with noise monitoring data gathered throughout the year.	CoA 7.3	Annually	Annual Environmental Management Report	GPM

5 Further Management Obligations

5.1 Monitoring

Monitoring for the project will be undertaken at designated receiver locations in Lidsdale, NSW, with positions outlined in Table A1 and Figure A1 in the Operational Noise Monitoring Program (Appendix A). These monitoring sites include Skelly Road (A), the corner of Sawyers Road and Skelly Road (B), the end of Nuebeck Street (C) and on Maddox Lane (D).

Compliance with operational noise criteria will be determined under the following meteorological conditions:

- wind speeds up to 3 m/s at 10 metres above ground; and/or
- temperature inversion conditions of up to 3°C/100 m and source to receiver gradient winds of up to 2 m/s at 10 m above ground level.

Operational noise from the KVAR will not exceed an LAeq (15 minute) of 40 dB(A) at the nearest most affected sensitive receiver during normal operating hours.

Where activities risk exceeding these objectives, management measures from the ONMP will be applied. Complaint-driven monitoring will be conducted at the complainant's property or the nearest representative site. Noise must be measured at, or computed for, the most affected location within the residential boundary, or at the most affected point within 30 metres of a dwelling (rural setting) where the dwelling is more than 30 metres from the boundary. A modifying factor correction must be applied for tonal, impulsive or intermittent noise in accordance with the "Environmental Noise Management - NSW Industrial Noise Policy (January 2000)".

Operational work hours are restricted to 7.00 am to 10.00 pm Monday to Sunday.

Operational activities are to be carried out in a competent manner.

This includes:

- the processing, handling, movement and storage of materials and substances used to carry out the activity; and
- the treatment, storage, processing, reprocessing, transport and disposal of waste generated by the activity.

5.2 Incidents and non-compliances

The following definitions are relevant:

- **'Incidents'** are defined as: "A set of circumstances that causes or threatens to cause material harm to the environment, and/or breaches or exceeds the limits or performance measures/criteria in this approval."
- **'Non-compliances'** are defined as: "An occurrence, set of circumstances or development that is a breach of this approval but is not an incident."

All non-compliances will be recorded in the appropriate registers and stored electronically i.e. site inspection checklists, auditing reports, complaints register. The non-compliance will be investigated and managed by the Environment Manager (or delegate).

If a noise exceedance is recorded, the result will be checked and verified, the source will be investigated / identified, and controls applied.

Corrective measures may include:

- Investigation, documentation and notification to senior management.
- Limiting simultaneous noisy works,
- Installing, relocating or maintaining equipment,
- Rescheduling high noise activities to less sensitive times.
- Toolbox talks and closer supervision.

Depending on the impact, community engagement and follow-up monitoring may be undertaken, with additional attended monitoring to verify the effectiveness of controls. All actions will be recorded in the Corrective Action Register.

5.3 Reporting

GPM maintains proactive reporting and communication processes to ensure transparency and regulatory compliance throughout operations.

Incident and Non-Compliance Reporting

GPM will notify the Secretary in writing via the Major Projects website: immediately upon becoming aware of an incident (CoA 7.1) and within seven days of any non-compliance (CoA 7.2).

Notifications will detail the nature of the event, relevant conditions, causes (where known), and corrective actions undertaken. Incidents recorded as non-compliances are not reported twice.

GPM will implement corrective and preventative measures as directed by the Secretary.

Emergency Operations

Operations outside approved hours may only occur in emergencies to prevent injury, property loss, or environmental harm.

GPM will promptly repair breakdowns and notify the EPA and affected sensitive receivers prior to emergency haulage or placement activities, and the Secretary within one week of the event.

If emergency operations occur more than once in two months, GPM will submit a report to the Secretary within 60 days, detailing the events, mitigation options, preferred measures, and implementation responsibilities.

Noise Monitoring Reporting

Quarterly operational noise monitoring reports will be submitted to the EPA.

Where monitoring identifies non-compliance, results will be reported to the EPA and the Secretary within 14 days.

Within 60 days of a confirmed exceedance, GPM will prepare a detailed mitigation report (as per CoA 2.18) identifying feasible source controls, preferred options, and consultation outcomes.

Where residual noise exceeds criteria after mitigation, additional reasonable and feasible building treatments will be implemented in consultation with affected landowners.

Annual Reporting and Compliance Tracking

An Annual Environmental Management Report (AEMR) will be prepared and submitted to the Secretary each year. The AEMR will:

- review compliance with approval conditions and management plans;
- summarise all environmental monitoring results and complaint records; and

- identify any exceedances or incidents and corrective actions taken.

An Annual Return will be submitted to the EPA in accordance with EPL 21185 and A Guide to Licensing within 60 days of the reporting period (due 13 November each year).

A Compliance Tracking Program will be implemented to record compliance status, audits, incident responses, and ongoing environmental performance review.

5.4 Review and improvement

A review of the OEMP, sub-plans (including this ONMP) and monitoring programs will be undertaken during operations as required. These reviews will be completed to determine the efficiency of the plans and monitoring programs and whether any changes are required to ensure compliance.

Circumstances which trigger a review include:

- changes to design, construction, work methods, legislation, or policy
- incidents, complaints or non-compliance
- changes identified by continuous improvement
- changes to key management plans that are relevant
- where additional monitoring measures are identified in annual reviews or audits.

In addition, and in accordance with CoA 6.6, GPM will review and, if necessary, revise the studies, strategies and plans required under the conditions of approval to the satisfaction of the Secretary within three months of:

- the submission of an incident report under CoA 7.1
- the submission of an Annual Review under CoA 7.3
- the submission of an Independent Environmental Audit under CoA 4.2
- the modification of the conditions of this approval (unless the CoAs require otherwise).

Where this review leads to revisions in any such document, then within 4 weeks of the review, GPM will submit the revised document to the Secretary for approval, unless otherwise agreed with the Secretary.

5.4.1 Update and amendment

Updates and amendments to this ONNMP must first be approved by Environmental Representative and then to be submitted to the Planning Secretary for approval via the Planning Portal website.

A copy of the updated plan will be distributed to all relevant stakeholders and changes implemented immediately.

5.5 Complaint Management

GPM will continue to use the measures for communication established for Lidsdale Ash Repository activities to ensure all community complaints and enquiries received are managed in an appropriate manner. The measures include:

- 24-hour community information and complaints line
- an online electronic form in which complaints and enquires can be transmitted.
- a postal address to which written complaints and enquiries may be sent

Specific contact details such as the 24-hour complaints line, the postal address and the online enquiry form can be found on the website here: <https://gpmco.com.au/contact/>

Further information is detailed in Section 3.6 of the OEMP.

Appendix A: Operational Noise Monitoring Program

Introduction

The Program has been developed in accordance with the NSW Industrial Noise Policy and CoA 3.3. CoA 3.3 states:

Ongoing Operational Noise Monitoring

The Applicant shall prepare and implement an Operational Noise Monitoring Program to assess compliance against the operational noise criterion stipulated in condition 2.15 of this approval, throughout the life of the project. The noise monitoring program shall be prepared in consultation with, and to the satisfaction of, the EPA.

The noise monitoring program shall be prepared in accordance with the requirements of the NSW Noise Policy for Industry (EPA, 2017) (or its latest version) and must include, but not be limited to:

- *monitoring during ash placement in the far western area of the site adjacent to the haul road; and*
- *monitoring of the effectiveness of any noise mitigation measures implemented under condition 2.18 of this approval, against the noise criterion specified in condition 2.15 of this approval.*

Noise from the project is to be measured at the most affected point on or within the residential boundary, or at the most affected point within 30 metres of a dwelling where the dwelling is more than 30 metres from the boundary, to determine compliance with the noise criterion stipulated in condition 2.15 of this approval. Where it can be demonstrated that direct measurement of noise from the project is impractical, the EPA may accept alternative means of determining compliance and the modifying factors shall also be applied to the measured noise levels where applicable in accordance with the NSW Noise Policy for Industry (EPA, 2017) (or its latest version).

The Applicant shall forward to the EPA and the Secretary a report containing the results of any non-compliance within 14 days of conducting a noise assessment.

Where monitoring indicates noise levels in excess of the operational noise criterion specified in condition 2.15 of this approval, approval, the Applicant shall prepare a report as required by condition 2.18 of this approval.

The monitoring program shall form part of the Operational Noise Management Plan referred to in condition 6.5a) of this approval.

The Program addresses noise emissions from ash management, internal road maintenance, water system operations, material haulage and placement, and site stabilisation and rehabilitation. It also outlines procedures for complaints management, noise monitoring, and post-commissioning requirements. The Program was developed in consultation with the NSW EPA, who advised they have no further comments. Correspondence confirming this is provided in Appendix C

Site context and surrounding environment

The Kerosene Vale Ash Repository (KVAR) is located approximately 2.5 kilometres north-east of the Wallerawang Power Station (WPS) and approximately 10 km north-west of the city of Lithgow. The nearest residential community is Lidsdale which lies approximately 1.5 kilometres to the west of the KVAR. The nearest properties are approximately 200 metres from the haul road which operates between the WPS and KVAR.

Residential properties at Lidsdale are between 15 and 40 metres below the haul road which runs on a ridge separating the existing and proposed ash storage locations from Lidsdale. The storage areas have been engineered from a previous quarry site and are 20 and 40 metres below the level of the haul road to the west.

A Noise and Vibration Impact Assessment (NVIA) was prepared as part of the Kerosene Vale Stage 2 Ash Repository Area Environmental Assessment (Parsons Brinckerhoff, 2008), which measured baseline conditions, and focused on ash transportation and placement activities.

The noise assessment conducted within the Mod 1 and 2 assessment noted that general operational activities were not expected to cause any exceedances of the noise goals established by the original PA 7_0005, as exceedance of these goals did not occur previously, when vehicle movements in areas close to nearby residents at Lidsdale were much higher. As such, specific noise predictions for the operational activities subject of this Monitoring Program have not been undertaken previously.

The NVIA has also been taken into consideration when determining monitoring locations and methodology.

Operational noise limits and compliance requirements

In accordance with CoA 2.8 and EPL 21185, cumulative operational noise from the site must not exceed 40 dB(A) LAeq (15-minute) at the nearest sensitive receiver.

Compliance is determined at the most affected location within the residential boundary, or within 30m of a dwelling in rural settings, with adjustments applied for tonal, impulsive, or intermittent noise in accordance with the NSW Industrial Noise Policy.

Noise limits apply under defined meteorological conditions, including moderate wind and temperature inversions. They do not apply where a negotiated noise agreement with affected residents is in place and the EPA has been notified.

Methodology

Attended environmental noise monitoring will be undertaken in general accordance with Australian Standard AS1055 – Acoustics, Description and Measurement of Environmental Noise and relevant NSW EPA requirements.

Monitoring will be conducted during both daytime (7am to 6pm) and evening (6pm to 10pm) periods at each designated location when operational works are occurring. The duration of each measurement will be 15 minutes.

At each monitoring location, atmospheric conditions (including wind speed, wind direction, humidity, and temperature) will be measured and recorded to support data interpretation.

The sound level meters shall be configured on A-weighted, fast response settings, with noise levels logged over fifteen-minute statistical intervals (LAeq, LAm_{ax}, LAm_{in}, and statistical percentiles as required). All instruments shall comply with AS 1259.1 Acoustics – Sound Level Meters, Part 1: Nonintegrating.

Calibration protocols include:

- Pre- and post-measurement field calibrations to verify the integrity of readings and identify any significant deviations in the reference signal.
- NATA calibration of sound level meters at least every two years, independent of the monitoring period.
- Acoustic calibrators used for field checks are to be NATA calibrated annually.

A detailed record of plant and machinery operating at the time of monitoring will be maintained. These operational records will be reviewed alongside measured noise levels to confirm the accuracy of predictions and assumptions made within the NVIA.

All measurements will be evaluated for potential modifying factors in accordance with the *NSW Noise Policy for Industry* (NPfI). Assessment of modifying factors is undertaken at the time of measurement if the site was audible and directly quantifiable. If applicable, modifying factor penalties will be reported and added to measured site-only L_{Aeq} noise levels.

Low-frequency modifying factor penalties will only be applied to site-only L_{Aeq} levels if the site was the only contributing low-frequency noise source. Specific methodology for assessment of each modifying factor is outlined in Fact Sheet C of the NPfI.

Locations

Site monitoring locations are detailed in Table A1 and shown on Figure A1. It should be noted that Figure A1 shows actual monitoring positions, not necessarily the location of residences. Monitoring locations were chosen due to proximity to operational works on site as well as in consideration of the noise monitoring locations used in the NVIA.

These locations are at the most affected point on or within the residential boundary, or at the most affected point within 30 metres of a dwelling where the dwelling is more than 30 metres from the boundary.

Table A1 Attended noise monitoring locations

Descriptor	Description	Coordinates (MGA 56)	
		Easting	Northing
Location A	Skelly Road, Lidsdale NSW	229052	6301209
Location B	Corner Sawyers Road and Skelly Road, Lidsdale NSW	228899	6301470
Location C	End of Nuebeck Street, Lidsdale NSW	228982	6301813
Location D	Maddox Lane, Lidsdale, NSW	229111	6302676

Noise monitoring as part of complaint investigation will be undertaken at the complainant property or nearest representative location.

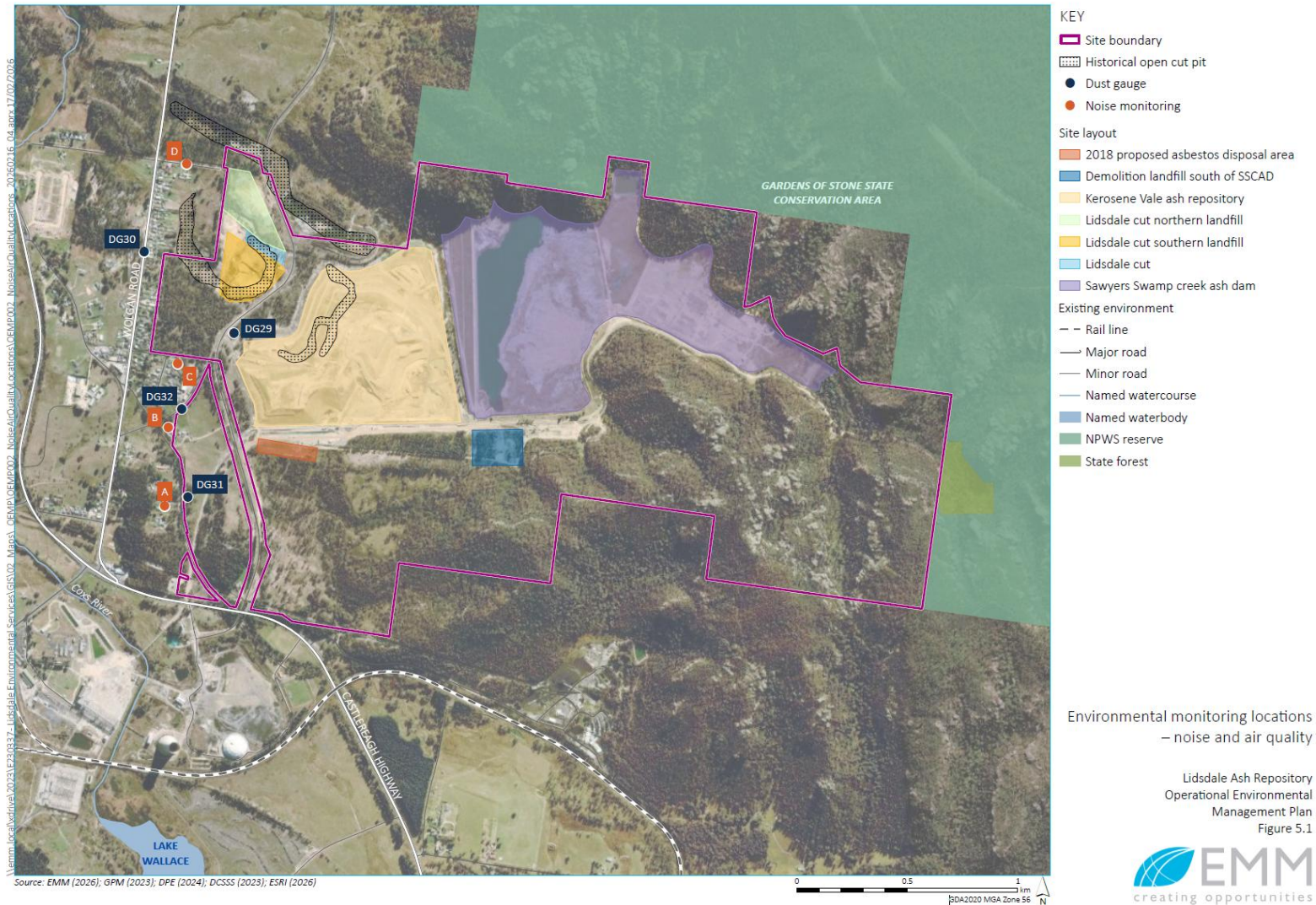


Figure A1 Noise monitoring locations

Frequency

Noise monitoring will occur quarterly (approximately every 3 months) during operation of the Lidsdale Ash Repository and in response to complaints.

The effectiveness of mitigation measure applied shall be assessed during these nominated noise monitoring events.

Reporting

A quarterly noise monitoring report will be produced and provided to the EPA. Noise monitoring will also be reporting in the Annual Environmental Management Report (AEMR), which will be submitted to the Secretary each year.

If the noise monitoring determines a non-compliance, a report will be forwarded to the EPA and the Secretary within 14 days of conducting the noise assessment. Further non-compliance reporting will be managed as outlined in Section 5 of the ONMP.

Appendix B: ER Endorsement of ONMP

31 March 2026

John Pola
Environmental Manager
Generator Property Management - Lidsdale
110 Skelly Road
Lidsdale NSW 2790

Re: MP07_0005 - Wallerawang Ash Dam Areas - Environmental Representative Endorsement - Operational Noise Management Plan Rev 5

Dear John,

Following a review of the documents provided for the Operational Noise Management Plan (ONMP) Rev 5 following consultation, I can provide the following endorsement.

The ONMP Rev 5 has been reviewed against the Mod 2 Consolidated Conditions of Approval, in particular Condition 6.5a. Consultation with NSW EPA is complete for this plan and has been incorporated in this document. All DPHI comments have been resolved.

All conditions of approval and mitigation measures are contained in the ONMP Rev 5.

The document is endorsed for submission to DPHI for approval.

Yours sincerely



David Bone
Independent Environmental Representative
dbone@emmconsulting.com.au

Appendix C: EPA Consultation Letter



Our ref: DOC25/12774-1

John Pola
Safety and Environment Manager
Generator Property Management Pty Ltd

By email: john.pola@gpm.com.au

Dear John,

**POST APPROVAL MANAGEMENT PLANS – KEROSENE VALE ASH REPOSITORIES
Generator Property Management – EPL 21185**

I refer to your request via the Department of Planning, Housing and Infrastructure (DPHI) for advice from the Environment Protection Authority (EPA) on the Construction and Operational Noise Management Plans, and the Air Quality Management Plan for the former Kerosene Vale Ash Repositories site (the Premises), Environment Protection Licence (EPL 21185).

In preparing this advice, the EPA has included a review of the following documents:

- *'Generator Property Management: Construction & Operational Noise Management Plan – Lidsdale Ash Repository 2024, November 2024'*.
- *'Generator Property Management: Operational Air Quality Management Plan – Lidsdale Ash Repository 2024, November 2024'*.

For your information, the EPA does not endorse Environmental Management Plans (EMPs) given the role of the EPA in developing conditions and criteria for environmental protection and management. The EPA does however encourage the development of EMPs and programs to ensure that proponents have determined how they will meet their statutory obligations and environmental objectives as specified by any Project Approval and/or conditions of an environment protection licence.

The EPA has reviewed the management plans as provided and has no comments at this stage. The EPA will continue to review any additional management plans as required.

If you have any further questions about this matter, please contact Allan Adams, Senior Operations Officer, Environment Protection Authority on 6333 3804, or at info@epa.nsw.gov.au.

Yours sincerely,

LUCY APPS
Unit Head
Environment Protection Authority

21 January 2025

NSW Environment Protection Authority
As the environmental steward and regulator of our
State we are committed to a sustainable future.
Join us on our mission to protect tomorrow together.

Phone:
131 555
Email:
info@epa.nsw.gov.au
Website:
epa.nsw.gov.au

Visit:
6 Parramatta Square
10 Darcy Street
Parramatta NSW 2150
Mail:
PO Box 1388, Bathurst
NSW 2795

