

JUNE 2026 · EDITION 01

Munmorah Community Newsletter

Progress, rehabilitation and community updates from the Munmorah site.



Message from the CEO

Welcome to the first edition of the Munmorah Community Newsletter. The newsletter is one of the ways we are improving engagement and transparent communication with our stakeholders and the general community. We have a lot happening on site and we are very keen to keep people informed about the great progress we are making to safely rehabilitate, decommission and redevelop the Munmorah site.

It's great to be able to share this update with you and highlight some of the progress we have made across the site.

Our team has been working diligently on rehabilitation and future planning. We have reached major environmental milestones and made improvements to site infrastructure. We've also continued to work closely with our partners, regulators and technical specialists to ensure this work is carried out carefully and transparently. Our long-term project development is helping shape a safer, more sustainable future for the Munmorah site.

We continue to work on strengthening our engagement with the community. Our Community Consultation Group meetings have been a valuable way to share updates, answer questions and hear community perspectives. The interest and support shown by members of the committee has been greatly appreciated, and we look forward to continuing these conversations as our work progresses.

We're committed to keeping you informed as we move through the next stages of rehabilitation and planning, and we look forward to sharing more updates with you as we shape the future of the site.

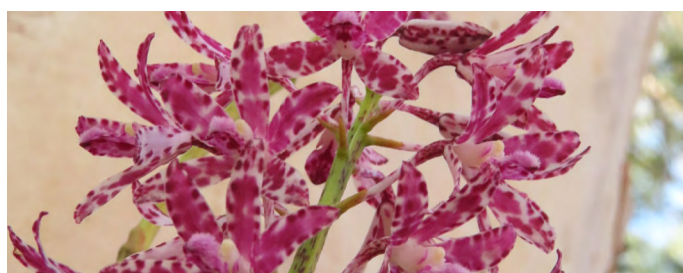
There have been many important milestones at Munmorah recently, and we're pleased to share a snapshot of the work underway to improve the site, support the local area and continue planning for its long-term future. Here are five key highlights.



Concept design of the Colongra Bay Sports Complex, provided by Central Coast Council

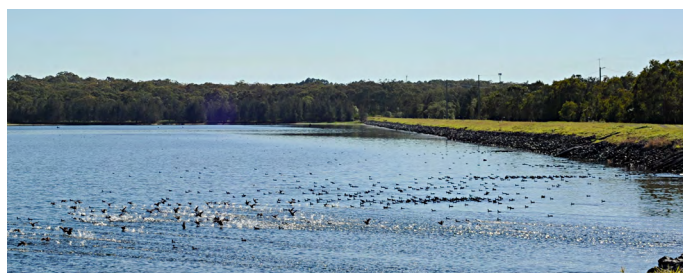
01 New sporting fields on the way

A major development for our site was the sale of 8 hectares on Scenic Drive to Central Coast Council, clearing the way for the brand-new Colongra Sporting Complex. With two turfed fields, netball courts and modern amenities on the way, this project will deliver a long-lasting boost for local sport, families and community life.



02 Land improvements support native regeneration

Ongoing land improvement works have delivered strong environmental results across the site. Targeted weed removal and native plant regeneration have helped restore natural habitat, improve ecosystem stability and encourage the return of native species — including native birds and orchids. These improvements are a meaningful step toward long-term environmental recovery and healthier bushland for the surrounding community.



04 Ash dam study strengthens planning

Our two-year monitoring program at the Colongra Creek Ash Dam continued, providing a clearer, season-by-season understanding of the site. This science-driven work is helping shape creek health and local biodiversity.



03 Asbestos clean-up completed safely

Around 300 tonnes of illegally dumped asbestos-containing waste was removed from the Scenic Drive area. The clean-up was delivered under strict EPA oversight and comprehensive air monitoring, and has made the site safer for the community and the environment.



05 Munmorah showcased in regional planning

Munmorah played a key role in the Central Coast Strategic Conservation Plan, with more than 40 stakeholders touring the site to see its unique mix of conservation value, infrastructure and future employment potential. GPM's submission and ongoing involvement ensures the site's future is shaped with both community and environmental outcomes in mind.



A big year of progress for the clean-up

GPM has begun the next major phase of the Munmorah remediation project, inviting specialist contractors to help design and plan the clean-up of the former power station site — following detailed investigations under our EPA-approved Voluntary Management Proposal.

We're now bringing experts in to help shape safe, practical and environmentally responsible solutions for soil and groundwater, and a long-term plan for future commercial and industrial use. We'll continue sharing updates as the remediation program moves forward.

Water treatment plant reaches a milestone

Early construction works on a new Water Treatment Plant are now complete. The plant will enhance our management of PFAS and other contaminants, ensuring water is managed safely as part of our long-term rehabilitation program.

It reflects our commitment to going above and beyond regulatory requirements, and has undergone all required assessments to meet strict environmental standards.



Community Consultation Group

Our Community Consultation Group meets quarterly to stay informed about current activities, upcoming works and long-term projects — a space to ask questions and speak directly with the people managing the site every day.

If you have any questions, ideas or feedback, our team would love to hear from you. Get in touch anytime:

● 02 4390 8994 ● info@gpmco.com.au



Funding available for local projects — apply today!

Applications are now open for our **Munmorah Community Grants Program** — a chance for local groups, clubs and organisations to bring new ideas to life. We're accepting applications **until 31 July** for projects up to **\$2,000**.

If you have an idea that could make a positive impact, tell us about it at info@gpmco.com.au



Patrick Clayton

ENVIRONMENTAL SCIENTIST · MUNMORAH

Pat joined GPM in May 2025 and has quickly become a key part of the environmental team at Munmorah. His role centres on maintaining environmental compliance across GPM's sites through monitoring, inspections and reporting, while also improving the way GPM works behind the scenes. With a background in chemistry and a passion for programming, Pat builds tools and systems that make environmental management more efficient as the organisation grows.

What he enjoys most is the mix of professional development and time spent outdoors. Much of his field work takes him deep into the bush, where he's just as likely to encounter a snake as he is to spot interesting wildlife. He values being part of a team that encourages curiosity, supports growth and gives people space to follow the interests that make them better at what they do.

Pat's advice for anyone entering the environmental field is simple: explore widely. His own path — from repairing lab instruments to processing pharmaceutical samples to teaching himself to code — shows how varied experiences can lead to unexpected opportunities.

Outside of work, Pat juggles a long list of hobbies, from surfing and running to basketball, fishing and trading card games. He also admits to an “unhealthy obsession” with a fantasy book series so long he doubts it will finish in his lifetime.

DID YOU KNOW?



Home to one of the world's largest battery projects

The Waratah Super Battery is being built on GPM-managed land. Once complete, it will be one of the biggest grid-support batteries on the planet — designed to protect NSW's electricity network during emergencies.



There's also a sports field on site — and it's bigger than you think

The Colongra Sporting Complex sits on a 2-hectare section of the site and is used by local clubs for training and community events.



Koalas live next door. Literally.

A portion of land beside the site is managed by Central Coast Council as Koala Park, a known habitat area for local wildlife.



The site still plays a major role in powering NSW

While the old power station is long gone, the site remains a key energy and infrastructure hub for the state, hosting:

- An Ausgrid substation
- A Transgrid switchyard
- The Snowy Hydro Colongra gas-fired power plant
- The Jemena gas distribution network
- An Axicom telecommunications tower



Around 720 hectares

The site is so large that if you walked its full perimeter, you'd cover roughly the same distance as walking from Doyalson to The Entrance and back.

More Online

Our website is loaded with documents — including our Year in Review, Voluntary Management Proposal updates, rehabilitation reports, news articles and links to our environmental data portal.

gpmco.com.au/munmorah

